

# ARAK SHADOW INDUSTRIAL CO.

[WWW.ARAKFACTORY.COM](http://WWW.ARAKFACTORY.COM)



# We have more than one factory for our products:

## Contents:

<b>ALUMNUM FACTORY.....</b>	<b>7</b>
MACHINRY & TOOLS.....	9
SPIDER SYSTEM&BALUSTRADE.....	11
ROLLING SHUTTERS&WINDOW SYSTEM.....	15
LOUVERS&DOMES AND SKY LIGHT.....	16
ALUMINUM SYSTEM.....	17
ALUMINUM PROJECTS.....	21
ALUMINUM APPROVALS.....	27
<b>WOOD &amp; WPC DOORS FACTORY.....</b>	<b>29</b>
MACHINRY & TOOLS.....	33
WOOD SYSTEM.....	36
WOOD SHOP DWG.....	39
PAINTING SYSTEM.....	41
WOOD PROJECTS.....	43
WOOD APPROVALS.....	52
<b>STEEL FACTORY.....</b>	<b>54</b>
MACHINRY & TOOLS.....	56
STEEL SYSMTEM.....	59
STEEL PROJECTS.....	61
STEEL APPROVALES .....	68
<b>OFFICAL DOCUMENTS.....</b>	<b>70</b>

# Who are we

We were formed to supply the Saudi Market with the latest in **Aluminum works, wood, Steel, Stainless Steel, Brass**, and All designs and works are using the latest technology known. At **Arak Shadow Factory** our “designers, engineers, employees, labors and technicians”

work as a team to provide our customers with the best customized products and to add value to the existing structure and enhance its appearance to fit well in its environment and to satisfy our customer.

We are Looking Forward to achieve Our Client’s Satisfaction & Trust, Delivering High – Quality and Cost-Effective Products on schedule by Employing and Supporting Motivated , Flexible and Focused terms. Our Relationship will remain fair and true in our dealings With all Employees Supplier, Clients and our Partners.

Our Clients count on us for our dependability, our integrity, our drive and our accomplishments with them as partners.

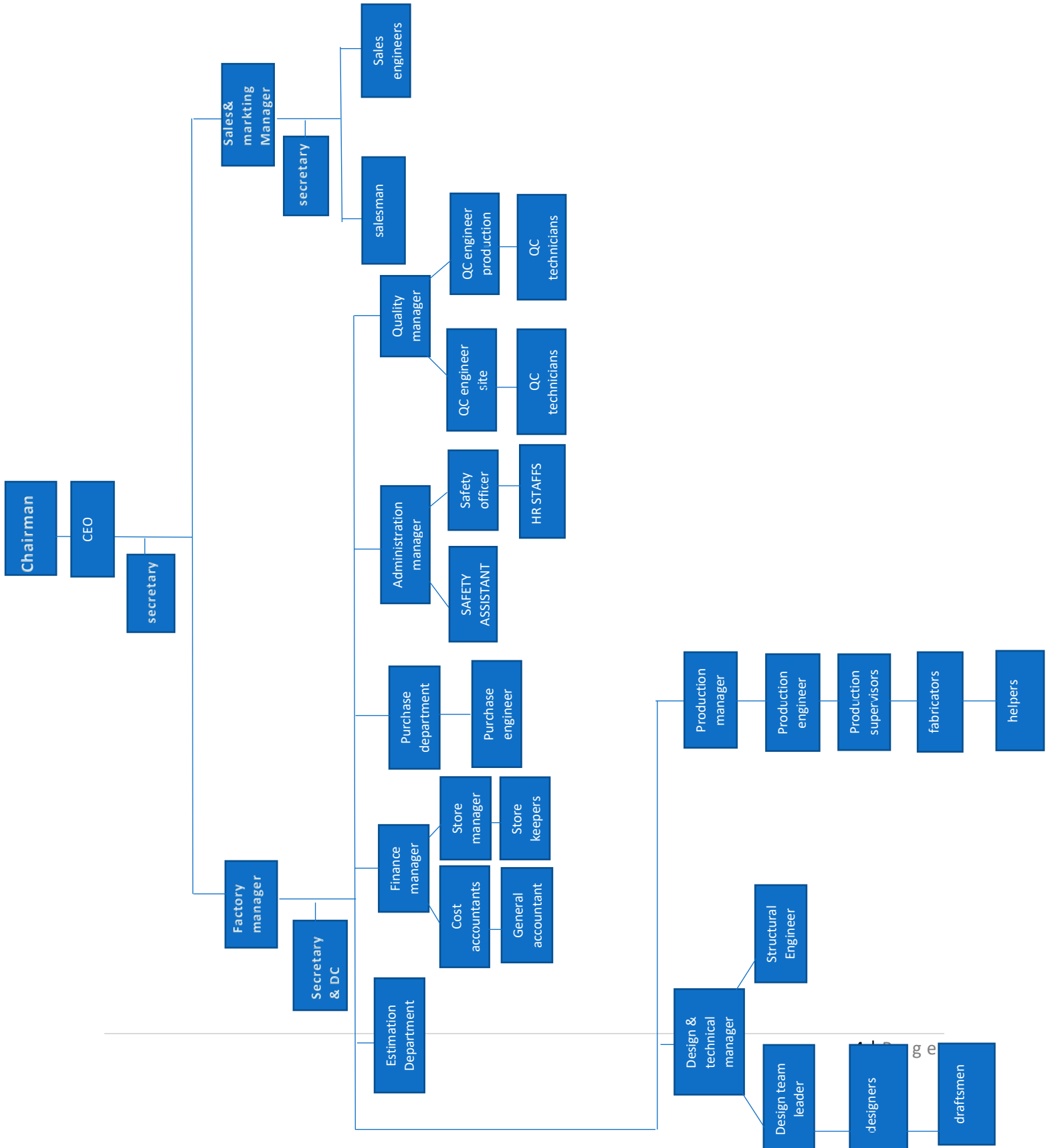
You Can Always Count on Our Sales and Representatives, engineers as they are always ready and eager to serve and provide you with all Necessary information

# Our Team





شركة ظل أراك الصناعية  
Arak Shadow Industrial Co.



# Our Vision

Arak Shadow Industrial Company for **Aluminum , wood , steel** aspires to be the leading provider of high-quality products through a sustainable endeavor to add value to all our clients



# Our Mission

Our mission is to provide high quality, **Aluminum , wood , steel** products responsibly through innovation, Excellence in creativity while maintaining maximum value for our customers.

We manufacture and install **Aluminum , wood , steel** products, according to the customer's request.

We have the best design team and they work on designs of iron, wood, and aluminum products according to customer demand and our vision.

With our management's aspirations to develop **Aluminum , wood , steel** works in the Kingdom, we are doing our best by using the latest steel and laser machines, and machines for **Aluminum , wood , steel**

Using quality systems and performance monitoring in our factory, we are fully prepared to meet the desires of customers from small, medium to large projects.

Our projects are: **Steel** doors, steel decorations, and all kinds of steel works.

**Wooden** decorations, wooden doors, wooden cabinets

**Aluminum** works of all kinds, windows, doors, in addition to all types of glass

# Services

**Arak Shadow Industrial Company** offers a comprehensive range of technical service, enhanced by the Creativity and innovation of its professional staff. Some of our technical programs include:

Assembly, Fabrication and Installation.

- Project Management.
- Providing proposals and solutions that meet customer requirements
- Early engineering consultation at various stages of project design and Specifications preparations.
- Concept Design & Engineering.
- Visual **Mock-Up**.
- Performance Mock-Up Testing.
- Supervision and technical support for project installation and maintenance
- Upgrade modification and development of used products
- After Sales Services.

# ALUMINUM FACTORY



## Our Facilities

Through constant expansion and development programs, in **ARAK** we are seeking to equip our factories with the latest and most advanced CNC machinery & equipment's and our company staff are multinational with extensive experience in the Aluminum field industry.

## Aluminum Factory

We specialize in the design, manufacturing, and installation of **Aluminum** curtain walling, structural glazing, windows, doors, screens, pergola, skylights, railings, handrails, cladding and canopies in a variety of systems for every type of commercial and residential buildings.

## Machinery & Tools:

Item No.	Machine Name	Purpose
<b>Fabrication &amp; Assembly</b>		
1	CNC Machining Center (CNC-1)	Computerized machining
2	CNC Machining Center (CNC-2)	Computerized machining
3	Double Mitre Saw(DM-1)	Numerically Controlled
4	Double Mitre Saw(DM-2)	Cutting
5	Single Mitre Saw	Numerically Controlled
6	Automatic Cutting Machine	Cutting
7	Radial Arm Saw	Numerically Controlled
8	Table Saw Cutting - Manual	Cutting
9	Cutting Machine Single -Manual	Cutting
10	Manual Notching	Cutting at any angle
11	Manual Notching - Rinaldi Adjustable Auto Notching	Cutting
12	Machine - Nothing Saw Manual Milling - Single	Cutting
13	Spindle Copy Router	End Milling
14	Manual Milling / Route	End Milling
15	Milling Machine	Notching
16	4-CORNER CRIMPING	Milling
17	MACHINE	Milling
18	Punching Tool	Milling
19	Corner Crimping Machine Corner Crimping Machine	4- Corner Crimping for Schucol
20	Corner Crimping Machine	Complete Punching set Installux System
21	Profile bending machine	Corner Crimping
22	Thermal Cut profile Knurling	Corner Crimping
23	Thermal Cut profile KnurlingMachine	Corner Crimping
24	Rod Inserting device	Rolling
25	Anti Unthreading Test	Knurling
26	Thermal Cut Loading Roller	Inserting
27	Thermal Cut Unloading Roller	Testing
28	Knurling Machine LoadingRoller	Support Stand
29	Knurling Machine UnloadingRoller	Profile Support Stand
30	Thermal Cut Profile Assembly	Crimping
31	Cremon Punching Machine_Automatic	Numerically Controlled Cremon
32	Cremon Punching Machine_Manual	Cremon punching for handle
33	Dust Collector - A	Dust Collector
34	Dust Collector - B	Dust Collector
35	Manual Cutting	Cutting
36	Bench Grinder	Grinding
37	Bench Drill	drilling
38	Lathe	For maintenanceturning, machining& threading
39	Protection Tape ApplyingMachine	For applying protection tape

## Machinery & Tools:

Item No.	Machine Name	
<b>ACP</b>		
1	CNC Machine - Pro MasterMatrix Table	Cutting, Grooving
2	Hydraulic Bending Machine(4 rolls)	Sheet Rolling
3	Cutting / Routing Machine	Cutting, Routing
4	Bending Machine	Bending
5	Cutting Machine	Cutting
6	Dust Collector	Cutting
7	Dust Collector-2	Dust Collector
8	Compressor	Air pressure
9	Dryer	Dryer
10	Manual Saw Machine	Cutting
11	Hydraulic Ironworker _DoublePiston	Press / Punch
12	3 rolls motorized plate bending machine_ 1.5Mt	Rolling

## SPIDER SYSTEM

Application of spider systems :

- Large main entrance facades of building and shop front facades
- Glass canopies
- Skylight and domes



## BALUSTRADE SYSTEMS

- Railings
- Balustrades



# TYPES OF DOORS

- Hinged Doors
- Sliding Doors
- Automatic Doors
- Revolving Doors
- Folding Doors



# Metal Cladding

- Wall Cladding
- Column Cladding



## Specifications:

- PANEL THICKNESS: 3, 4 & 6MM.
- PANEL WIDTH : 1000,1250,1575 MM (MAXIMUM)
- PANEL LENGTH : UPTO 7 METRES AVAILABLE .
- Newly developed composite material like Titanium Composite Material (TCM),|
- Stainless Steel Composite Material (SCM) & Zinc Composite Material(2CM) have been introduced in the market. TCM & SCM are used for projects in which. longevity is essential & ZCM offers a nature oriented finish that features natural weathering.
- Area of application: for external facades.
- For external facades
- for restoration purposes of on buitings in order to eve it a new look.
- Decoration of interior walls, ceilings, bathrooms, kitchens and bakonies
- Shop's door decorations
- Advertisement boards , display platform and signage
- Walliboards and ceilligs for tunnels
- For roof-top or main entrance canopies.
- Column decorations

## Steel Structures

Steel structures are a combination of elements like steel tubes, I-Beams, C-Channels used to hold free standing curtain wall facades, canopies, skylights, spider system facades & many other areas where applicable. This can be a fixed structure or a movable design to take into consideration the building movements itself.

The finish of the steel structure can be hot-dip galvanized for concealed areas or as per the project approved color for visible areas.

As part of our quality procedures, we ensure that all steel structure works are carried out by certified welders & fabricators & based on approved series of international standards, be it MIG or TIG welding.

Our design team designs all types of complicated steel structure based on 3-D modeling on ACAD & simultaneously simulating in structural software tools like STAADPRO ensuring the desired level of output as per the design intent of the client



## Rolling Shutters

ARAK provides rolling shutters either automatic or manual or with both function based on project requirements. Slats used can be up to 65mm depth with specially insulated ones as per customer requirements. Operation of the shutter slats with remote on single channel or up to a maximum of 20 channels is also available.



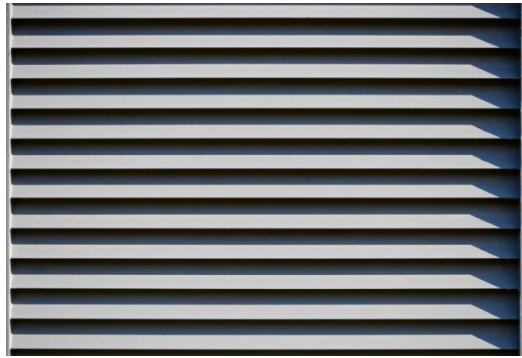
## Window Systems

- Hinged Windows
- Sliding Windows
- Top & Bottom Hinged Windows
- Tilt & Turn Windows
- Pivot Windows
- Lift & Slide Windows



## Louvers

Commercial louvers which can reduce up to 80% of direct radiation effect are available with us. Louvered doors & air intake or exhaust louvers matching project requirements are also provided by us. Options or manually electrically operated is also available.



## Domes and Skylights

Skylight is like a horizontal window or opening place in the roof to admit natural daylight or to give a clear vision of the sky at night. Materials used for admitting light or to provide vision can be glass or acrylic sheets depending upon the project requirements framing members supporting such type of materials can be either aluminum profiles or steel framing suitably treated to avoid corrosion.



# ALUMINUM SYSTEM



شركة ظل أراك الصناعية  
Arak Shadow Industrial Co.



## SL60 Curtain Walling System

**CATEGORY**  
Curtain Walling

### Description

The SL60 system, with mullions and transoms with a width of 60 mm is designed to create vertical curtain walls, sloping facades, roofs, domes, tunnels and polygonal constructions.

The system includes a range of profiles for the construction of the supporting structure with static characteristics suitable for the most stringent design requirements.



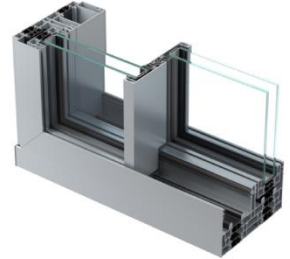
## Infinium sliding door

**CATEGORY**  
Sliding Doors

### Description

Infinium brings together indoor and outdoor living spaces in exquisite harmony. Free-flowing spaces are created thanks to stunningly slim sightlines that bathe every surface with natural light. Uninterrupted panoramic landscapes provide complete escapism, without need of escape. While seamlessly integrated floor-to-ceiling glazing reflects the clarity of thought behind every inspired design decision.

Fully concealed aluminum outer frame and sleek, flush thresholds, elegantly simple operation. Infinium's considered design impresses from every angle. However, its most remarkable design feature barely catches the eye. The impossibly thin 21 mm sightlines create the illusion of large endless spaces. The effect is charming, yet practical. Minimalist, yet undeniably magical.



## 77IW-IWL-ID

**CATEGORY**  
Casement Windows

### Description

The 77IW is a complete, high performance, 77mm series created to meet the highest levels of market requirements in terms of design, performance and attention to detail.

This system offers high thermal insulation with Uw-values of 0.9 W/m<sup>2</sup>K (triple glazing), obtained through the use of the best components and technology.



## 50IWOOD

**CATEGORY**  
Casement Windows

### Description

This 50mm aluminum-wood window system combines the aesthetic design of wood with the high acoustic and thermal performances of the aluminum.

The aluminum is the core of the frame and, due to its resistance to atmospheric agents, it reduces maintenance costs while maintaining excellent performance over a long period of time.

The wood placed inside harmonizes the window in both classic and modern environments.



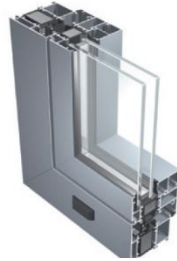
## 63TT

**CATEGORY**  
Casement Windows

### Description

The 63TT is a 63 mm, flush thermal break door system with heavy duty hinges and available both inward and outward opening. It guarantees optimal quality and sturdiness.

This system adopts thermal break bars and strong aluminum profiles to ensure optimal environmental protection. Its hardware is durable and simple to operate.



## SCI56TT

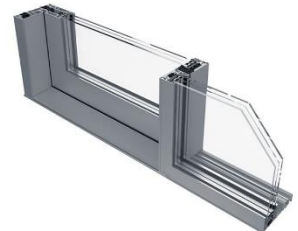
**CATEGORY**  
Sliding Doors

### Description

The SCI56TT is a thermal break lift & slide door system designed to achieve wide panoramic views and large openings.

Its slim central interlock and the absence of visible hardware maximize the natural daylight in the interior and provide greater comfort.

Its high level of thermal and acoustic insulation and its outstanding water-tightness performance, combined with its wide range of configurations will satisfy any architectural requirements.



## Optio BSF70 HI Bi-fold Door

**CATEGORY**  
Folding Doors

### Description

Welcoming, stunning, practical.

An intelligent combination of form and function, our highly versatile and market-leading Bi-fold sliding door system gives you maximum control over the style and operation of the doors.

Multiple panels can be added to accommodate the design specifications of your building, with the option to open in or out as required. This system also boasts a unique flush line top, our handle that allows for square flush stacking panels when doors are fully open.



## SCI40TT

**CATEGORY**  
Sliding Doors

### Description

The SCI40TT is a 40 mm thermally broken sliding system for windows and doors, also suitable for the realization of lift and slide solutions.

The series is designed for the construction of high-quality frames.

The lift and slide mechanism, designed to facilitate the movement of heavy frames up to 400 kg, makes this system very practical and functional.





## SOLUTIONS

### Monorail

#### Advantages

- Perfect integration in the veranda and house extension (structural loads transmission under the eaves)
- Possibility of producing large-scale assemblies
- Inertia reinforced by the structure



### Sliding pocket doors

#### Advantages

- Full range of integration profiles
- Wide choice of design (1, 2 or 4 leaves)
- Specific solution for roller shutter integration
- Two designs of finishing covers



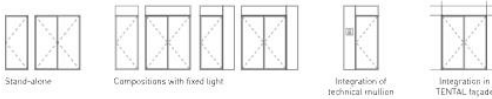
## SOLEAL NEXT DOOR

/ MORE APPLICATIONS

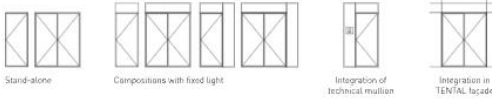
The SOLEAL Next door is available in 75 mm, 65 mm and 65 mm non thermal break. Its modularity allows a wide choice of applications.



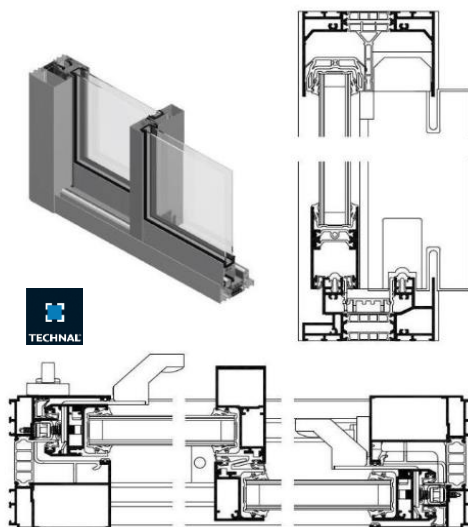
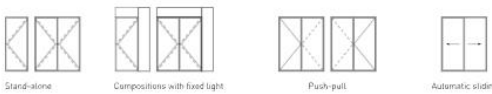
### Open-in Single Action



### Open-out Single Action



### Double Action



## KEY FEATURES AND INNOVATIONS

### MORE DESIGN

- Concealed hinges
- EXCLUSIVE™ handle collection
- EXCLUSIVE™ colour pallet

### LARGE DIMENSIONS

- Modules: 65 and 75 mm
- Height: up to 3 meters
- Glazing thickness: up to 49 mm (module 65) or 59 mm (module 75)
- Infill weight: up to 200 kg

### MORE APPLICATIONS

- Multiple opening options:
  - Open-in and open-out, 1-leaf or 2-leaves
  - Single action, with or without fixed field
  - Double action, with or without fixed field
  - Push-pull
  - Vent overlapping panel
  - Simultaneous door
  - Automatic sliding door
- Facade integration
- Compatible with TENTAL facade, and SOLEAL Next window ranges.

### MORE SAFETY & ACCESSIBILITY

- Finger protection
- Burglary and bullet resistance
- Emergency exit
- Anti-bacterial nano-coating on handles
- Barrier free and low threshold
- Mechatronics insertion (technical mullion)

### MORE PERFORMANCES

- Endurance test for heavy traffic - up to 2.000.000 cycles
- Acoustic insulation up to 43 dB
- Weather and thermal performances complying to highest international standards

### MORE SUSTAINABILITY

- SOLEAL Next is made in Hydro CIRCAL®, aluminium made with a minimum of 75% recycled end-of-life aluminium.
- PVC-free components
- Cradle to Cradle® under certification
- Dynamic EPD available on TechDesign
- 75% recycled and 95% recyclable

### SOFTWARE

- Available in TechDesign
- BIM: available in Tech3D, Archicad and REVIT



# ALUMINUM PROJECTS



شركة ظل أراك الصناعية  
Arak Shadow Industrial Co.



شركة ظل أراك الصناعية ذ.م.م  
Arak Shadow Industrial Co. LLC  
أعمال الحديد والالمنيوم والخشب Steel, Aluminium, Wooden Works

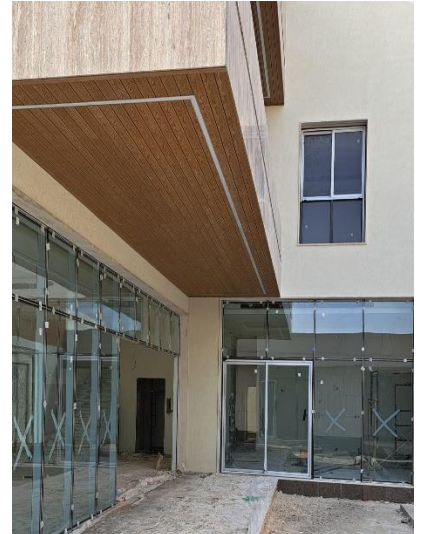
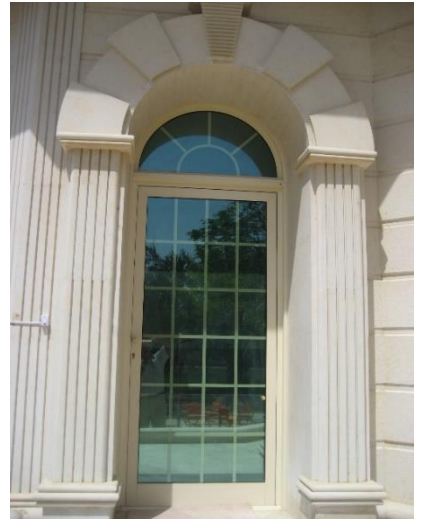
Aluminum Projects			
No.	Client	Project	Scope of work
1	Saudi Amana Company	NOON Project	Aluminum works
2	Riyadh specialized center Company	Riyadh specialized center co.	Aluminum works
3	Art crft foundation	private villa	Aluminum works
4	Design elements Company	private villa	Aluminum works
5	Al nashaa trading Company	Novtel hotel	Aluminum works
6	Ajyal Al amarah Company	private villa	Aluminum works
7	Doniyaa projects Company	private villa	Aluminum works
8	Middle east Company	rest house	Aluminum works
9	Middle east Company	rest house	Aluminum works
10	Products Line Company	private villa	Aluminum works
11	Products Line Company	private villa	Aluminum works
12	Al khoyol Al arabiyah Company	private villa	Aluminum works
13	Sultan Al hadlaq	private villa	Aluminum works
14	Mouhammad al zubaigy	private villa	Aluminum works
15	Awadh Al harbi	private villa	Aluminum works
16	Abdullah al zubiq	private villa	Aluminum works
17	Faisal al sanea	private villa	Aluminum works
18	Ahmad Al tawajri	private villa	Aluminum works
19	Yousef al bayali	private villa	Aluminum works
20	Princess Sara Bint Fahad Al Saud	private villa	Aluminum works
21	Al khoyol Al arabiyah Company	Block 10 residential complex	Aluminum works
22	BEC Company	AMALA PROJECT	Aluminum works
23	Saudi Amana Company	Human Resources and Maintenance Complex	Aluminum works
24	Aknan Company	Huraimla Mousq	Aluminum works
25	Al khoyol Al arabiyah Company	Sukainah 9 project	Aluminum works
26	Al khoyol Al arabiyah Company	Sukainah 10 project	Aluminum works
27	Princess Sarah bint Muqrin	private villa	Aluminum works
28	Princess Sarah bint Fahd	private villa	Aluminum works
29	Rabwat Al Yasmeen Company	Residential complex	Aluminum works





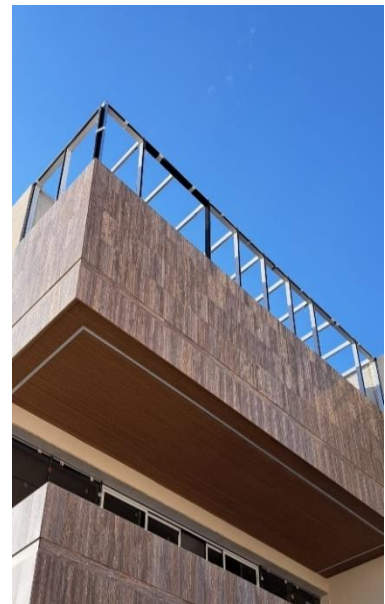
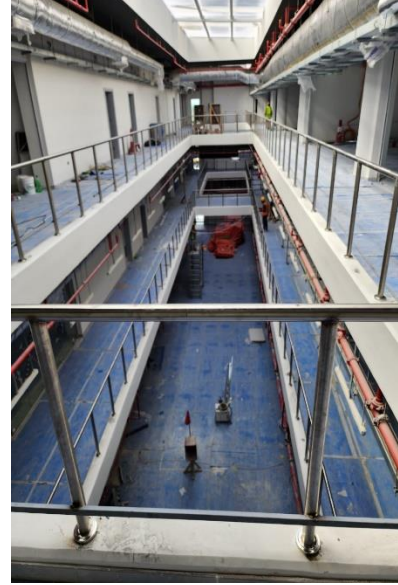


شركة ظل أراك الصناعية  
Arak Shadow Industrial Co.





شركة ظل أراك الصناعية  
Arak Shadow Industrial Co.





# ALUMINUM APPROVALS



شركة ظل أراك الصناعية  
Arak Shadow Industrial Co.

**ARAK SHADOW** The Red Sea Development Company **AMANA**

**Design And Build Of Coastal Village Hotel At The Red Sea Project**

**MATERIAL APPROVAL REQUEST**

To: The Red Sea Development Company (RSDC)  
Attention: Mr. Moham Ghazwan

Cc: Mr. Sean Lee

TRSDC Ref: R03-R03B02-SAC-MAT-AR-0080-00 For Resubmission Only  
SAC Ref: KJ-113-O-EN-MAT-0128-00 Client Letter Ref  
Date: March 20, 2021

**APPROVAL REQUESTED FOR:** Aluminum Composite Panels Cladding  
Refer to sample submittal R03-R03B02-SAC-SMP-AR-0032-00

Manufacturer/ Supplier: ARAK  
Country of Origin: KSA  
Sampler Finish: -  
Category: Material  Technical Data  Catalogue  Sample List  Physical Sample  Others: Drawings

**LOCATION WHERE USED:** Hotel clusters external cladding

**RELEVANT DRAWINGS AND SPECIFICATIONS:** As per attached.

**MATERIAL CONFORMS TO SPECIFICATION: YES**

Signature	Prepared By	Reviewed By	Approved By
	Nagar Abbas	Faher Fahg	Oussama Elshaban
	Document Controller	Technical Manager	Sr. Project Manager

**CLIENT / CONSULTANT COMMENTS:**  
 Code A: Approved  Code B: Approved with Comments  Code C: Rejected (Revise & Resubmit)  Code D: For Information

**REMARKS:**

20200003\_08.17

Final (WF-027712) 110C08 - Prequalification Approvals - Prequalification of arak shadow for light metal works ( handrail and ladder , etc. )

**AMAALA** **Red Sea Global**

MAIL TYPE: Workflow Transmittal  
MAIL NUMBER: AMAA10110-WTRAN-032004  
REFERENCE NUMBER: AMAA10110-WTRAN-032004

From: Mr. Ahmad Ghazwan - RSDC, Saudi Development  
To: Mr. Sean Lee - RSDC, Saudi Development  
Cc: Mr. Faher Fahg - RSDC, Saudi Development  
Sent: Wednesday, August 19, 2020 10:18:38 PM (GMT+03:00)  
Status: N/A

**DOCUMENT ATTACHMENTS (1)**

File	Document No.	Revision	Title	Status
	WF027712-110C08-0000	C1	Prequalification of arak shadow for light metal works ( handrail and ladder , etc. )	Accepted with Comments

**MESSAGE**

Workflow Review History

The attached documents have completed the "110C08 - Prequalification Approvals - Prequalification of arak shadow for light metal works ( handrail and ladder , etc. )" workflow with the following history:

Doc No.	Step	Participant	Review Outcome	Comments
WF027712-110C08-0000	02	Mr. Ahmad Ghazwan	Approved	
WF027712-110C08-0000	03	Mr. Sean Lee	Review Not Required	

20200003\_08.17

**RC, Senior Mechanical Review**: Y. Jassir - Review Not Required

**RC, Senior Architectural Review**: F. Alshaban - Accepted with Comments - Refer to comments on the attached LMS

**RC, Senior Structural Review**: O. Ghazwan - Review Not Required

**RC, Resident Engineer Review**: H. Hammad - Accepted with Comments

**Project Manager Review**: A. Alshaban - Accepted with Comments - No objection subject to completion with LMS, accordingly to LMS.

**AMANA** **ARAK SHADOW**

**Material Sample Tag**

NOON LOGISTIC HUB RIYADH

To: Site Project Manager - House of Consulting Office (HCO)  
Attention: Mr. Abdul Bari  
Sample Tag No.: KJ-127-O-EN-STG-0016-02  
Country of Origin: KSA  
Sampler Finish: Powder Coated  
Date: October 27, 2022

**SAMPLE APPROVAL REQUESTED FOR ITEM / ITEMS**

Aluminum Doors & Windows Hardware Sample	
Stainless Steel Frameless Door Hardware Sample	
Aluminum Curtain Wall SG50-195/95 MM Profile (WT3.4,5.8,11,12,13,17,18,19,20,21,22)	
Aluminum Glazed Partition Wall 12 MM Clear Temp Glass (WT6.7,8,10,14,15,16,24,26,28,27,28...)	

**RECEIVED** 5 OCT 2022

**CONSULTANT / CONTRACTOR / CLIENT**

Owner: وزارة الثقافة والرياضة  
CONSULTANT: A.R.C.H.B.N  
CONTRACTOR: EL SEIF ENGINEERING CONTRACTING Co. Ltd

PROJECT NO: JAZAN-A  
PROJECT NAME: South Border Housing Project  
Work Package: جزمة الأضواء  
Location: SDB & S11  
Discipline: Arch

**DOCUMENTS SUBMITTED**

Ref No: JA-CDC-SAM-A-138  
Rev. No: 00  
Date: 22-06-2021

Sub. No: MS ARCHEN Engineering  
Subject: Samples for Wrought Iron Doors (Arak Shadow Factory for Wrought Iron & Aluminum Product) JA-MR-A-PH-027.1

**WE SUBMIT THE FOLLOWING:**

Item Number in the Board	Item Description	Design	Remarks
1	Wrought Iron Doors	2 Samples Board + 2 Samples	2 Samples Board + 2 Samples for Each Sites SDB & S11

**OTHER REMARKS:**

**RECEIVED** 27 JUN 2021

Contractor's Authorized Manager: Tarek Al Mamlook  
Consultant's Representative: Adnan Elmaleh

**Refer to the attached comments**

Status:  A - APPROVED  B - APPROVED AS NOTED  C - REVISE & RESUBMIT  D - REJECTED

Signature: 23/06/2021

**UCS** **AMANA**

**Project - ALSHAYA FOOD FACTORY - SUDBIR-01- RIYADH**

**Drawing Transmittal**

Client: ALSHAYA International Trading Co.  
Consultant: UCS Consultancy Services LLC  
Attention to: Mr. Jassir Elmer  
CC: Mr. Mohamed Taha (Project Manager - UCS)

Amara: KJ-117-O-AS-EN-FRS-0348  
Date: 30 Oct-21

**TYPE OF DRAWINGS**

Design Drawing  Coordination Drawing  Specification  
 Shop Drawing  Sketch Drawing  BOQ Reference  
 Calculation  Others (Survey Coordinates)  Drawing Ref.

**Attachments of Drawing**

Architectural Drawing  Structural Drawing  Steel Structural Drawing  MEP Drawing  
 Supplier Drawings  Builders Work Drawing  Erection Drawings  Others (SD View)

S.No	Document/Drawing No.	REV	Description	Discipline	Issued for
1	10-117-O-EN-SAL-02-AFA-0100	04	FLOOR PLAN REFRIGERATION PLANT	ALUMINIUM	APPROVAL
2	10-117-O-EN-SAL-02-AFA-0200	04	ACP CLADDING ELEVATION REFRIGERATION PLANT	ALUMINIUM	APPROVAL
3	10-117-O-EN-SAL-03-AFA-0401	04	ACP CLADDING SECTIONS REFRIGERATION PLANT	ALUMINIUM	APPROVAL
4	10-117-O-EN-SAL-02-AFA-0802	04	ACP CLADDING ELEVATION REFRIGERATION PLANT	ALUMINIUM	APPROVAL
5					
6					
7					

Project Coordinator: Ibrahim Attieh  
Project Manager: Ahmed Mustafa Ayad  
Consultant Comments: Refer to Comments attached to drawings

Signature: 01 Dec-21  
Date: 30-Dec-21  
Approval Status (By Consultant):  
 Code A: Approved  
 Code B: Approved with Comments  
 Code C: Not Approved / Revise & Resubmit  
 Code D: For Information

For Consultant: Eng. Omar Addasi  
Signature: 01 Oct 2022  
Date: 01 Oct 2022

Consultant PM's Comments

For Consultant: Signature: 01 Oct 2022  
Date: 01 Oct 2022

Amara Receiver's: Signature & Stamp  
Date:

# WOOD & WPC FACTORY

## Our Facilities

Through constant expansion and development programs, in ARAK we are seeking to equip our factories with the latest and most advanced machinery & equipment's and our company staff are multinational with extensive experience in the wood field industry.

## Wood & WPC Factory

We specialize in the design, manufacturing, and installation of Wooden Works, fire rated BS&UL label /non-fire rated doors, wooden cladding, wooden cabinet, CNC wooden decorative, and may products of wooden works, we serve many of projects commercial and residential buildings.

# How to detail WPC doors

How to make WPC (Wood-Plastic Composite) doors:

Step 1: Assemble the components:

The process of making WPC doors begins with assembling the main components. These ingredients include crushed or crushed wood fibers and high-quality plastic polymers. Quantities are carefully measured and carefully mixed to ensure even distribution.

Step 2: Add auxiliary materials:

The next step involves adding auxiliaries, such as stabilizers, flame retardants, corrosion inhibitors, and dyes. These materials contribute to improving the properties of doors and making them resistant to environmental factors.

Step 3: Dough and chewing gum:

After mixing the ingredients, they are kneaded evenly and homogeneously using special equipment. This process contributes to the even distribution of wood fibers and polymers and the formation of a homogeneous mixture.

Step 4: Shaping:

After kneading, the mixture is shaped into the desired shapes and sizes using Molds Therefore, doors can be designed in different shapes and styles according to needs.

Step 5: Polishing and finishing:

The doors are post-molded to obtain the desired finish. So this step can include trimming edges and applying final finishes such as colors, tattoos and patterns.

Step 6: Inspection and Quality:

The doors are carefully inspected to ensure that they meet set quality standards. Doors are measured to verify their accuracy and resistance to environmental factors.

Step 7: Packing and Shipping:

Once the quality is checked, the doors are carefully packed and shipped to reach the end customers.



## About manufacturing WPC doors

The manufacture of WPC doors relies on a precise and specialized process that combines craftsmanship skills and advanced technology. So the result is doors of natural beauty and high performance that meet consumer expectations and last for many years while maintaining their appearance and high quality.

## WPC & door detailing factory

Our factory manufactures and details WPC doors, as our factory in the of KSA is one of the prominent industrial projects that contribute significantly to meeting the needs of the local market. Therefore, this factory is characterized by high quality standards and modern technology, which makes it able to offer a wide range of doors in various shapes, sizes and designs. Thanks to its dedication to research and development and the use of the latest technologies in manufacturing processes, customer expectations are met and doors are guaranteed to be durable, safe and beautiful at the same time. PVC doors are also available

# MACHINRY & TOOLS

### WOOD WORK SECTION MACHINES

S.N.	MACHINE	COUNTRY OF ORIGIN	QTY	COMPANY	ARABIC NAME
1	CNC 3 AXES WOOD ROUTER	CHINA	1	ACCTEK	راوتر حفر خشب 3 محاور
2	WOOD HEAT PRESS MACHINE CNC	ITALY	1	ORMA	مكبس خشب حراري
3	WOODEN VENEER CUTTER NC	ITALY	1	CASATI-CIM31	مقص قشرة اوتوماتيك
4	WOOD PRESS MACHINE	ITALY	1	STETON	مكبس اخشاب
5	Veneer Stitching Machine	ITALY	1	CASATI-Z1000	ماكينة خياطة قشرة
6	VERTICAL DOOR LOCK MORTISER	ITALY	1	CENTAURO-CVS60	منقار رأسي
7	HORIZONTAL DOOR LOCK MORTISER	ITALY	1	SAC	منقار افقي
8	combined milling machine	ITALY	1	OMEC-F9TS	ماكينة تكعيب حلوق
9	HAND CUTTER	ITALY	1	MASTERWOOD-R90	منشار قص اخشاب
10	WOOD PLAINER MACHINE 1	ITALY	1	SAC FS 530	رابوب 1
11	WOOD PLAINER MACHINE 2	ITALY	1	SCM F520	رابوب 2
12	WOOD THICKNESS MACHINE 1	ITALY	1	SCM S 520	تخانة 1
13	WOOD THICKNESS MACHINE 2	ITALY	1	SAC RS.63	تخانة 2
14	SLIDDING TABLE SAW	ITALY	2	SCM NOVA SI400	منشار صينية
15	MULTI CUTTER MACHINE	ITALY	1	SCM CLASS M3	منشار متعدد الاقراص
16	BAND SAW 1	ITALY	1	SAC ASCOM	منشار شلة 1
17	BAND SAW 2	ITALY	1	MABER	منشار شلة 2
18	MOULDING MILLING MACHINE 1	ITALY	1	SCM NOVA TI 105	فريزة حلايا 1
19	MOULDING MILLING MACHINE 2	ITALY	1	SAC TS 120	فريزة حلايا 2
20	EDGE BANDING MACHINE	ITALY	1	SCM OLIMPIC K560	ماكينة قشاط
21	ANDING MACHINE	ITALY	1	SCM	مكنة سفرة
22	DOUBLE HEAD COMPRESSOR	ITALY	1	BOTTARINI	كمبريسور

## Arak shadow industrial Co.

### Wooden Doors

- fire rated wooden doors / external or/Internal
- Wooden doors – Exterior
- Wooden doors – Interior
- Solid Doors
- Panel Doors
- Veneer Doors
- Flush Doors
- Semi-Solid Doors
- Sliding Doors
- SLIDING Folding Doors
- Glass Doors
- Solid Windows
- Glass Windows

### Wall Paneling

- All Kind of wall Paneling & Design
- Wooden Wall Paneling
- Wooden window
- Wooden roof

### Wooden cabinets

- Designing Area Wardrobe
- Wooden clothes cabinets
- Wooden wall cabinet

### Wooden Kitchen furniture - Kitchen Units

- Kitchen Designing
- Base Cabinets
- Wall Cabinets
- Larder Units
- Wooden Counters

### Office Furniture

- Executive office complete set
- Filing Cabinets
- Meeting Tables
- Workstations
- Reception Counter
- Executive Chairs
- Visitor Chairs

### Room Items

- TV unit
- Bed
- Beds Side Tables
- Wooden Sofa Sets
- Wooden Side Tables
- Wooden Chair
- Dining Tables
- Dining Chairs

# WOOD SYSTEM

# TECHNICAL SPECIFICATIONS

## GENERAL:

The wooden doors and frames should be manufactured by Modern Wood works in accordance with the specification & drawings approved by Client.

## CONSTRUCTION FOR WOODEN DOORS:

### (1): MATERIAL

1. Except specified, all flush doors shall meet the requirement of NWMA-ISI.
2. Wood Veneer: Quality grade will be premium door having a stain or Natural finish and sound grade for doors.
3. Species will comply with specification and drawing approved by client.
4. Color: Minimum thickness of 0.8mm meeting the requirements of NWMAID-3. Color will be selected by the client.
5. Laminated Plastic Faces: Minimum thickness of 1.2mm meeting the requirements of NWMALD-3.
6. Adhesives: All adhesives will be water proof mela mine for tified urea type.
7. The core of each wooden door will be constructed as follows:

# TECHNICAL SPECIFICATIONS

## A. SOFT WOODS OLID BLOCK CORE DOOR:

Standard and better grade softwood. 40mm Width intermediated rails which will be joined staggered and blocks are not glued together.

## C. SOFTWOODSEMI-SOLIDBLOCKCOREDOOR:

40mmWidthIntermediaterailsarespacedbutnot 60mm apart.

## D. FIRE RATEDDOORS:

FIRE RATING 12mm CHIP 12mm GYPSUM

30 Minutes 2 Layers 1 Layer

1 Hour 1 Layer 2 Layers

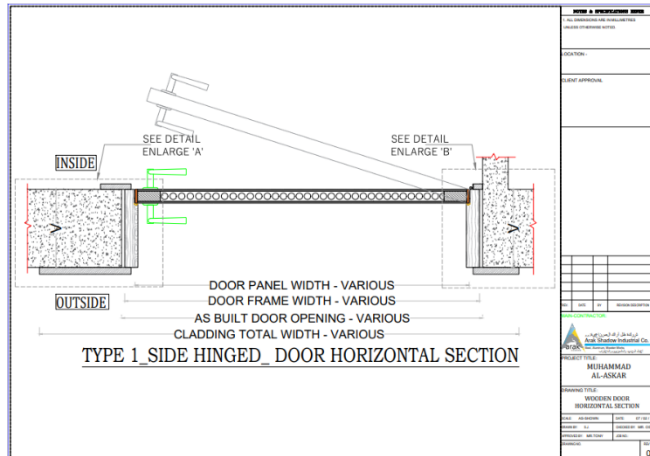
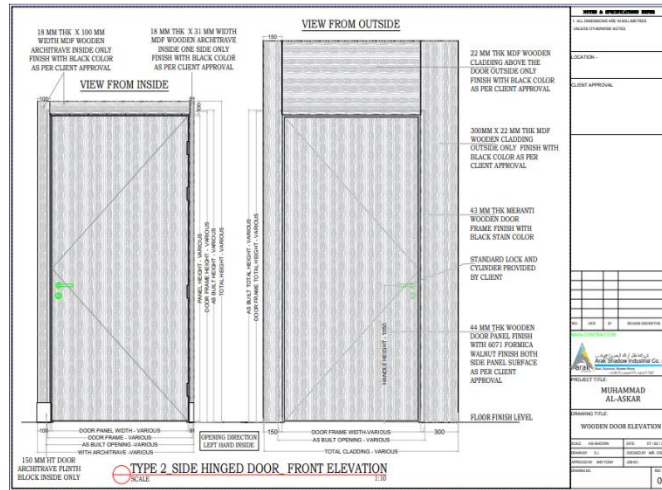
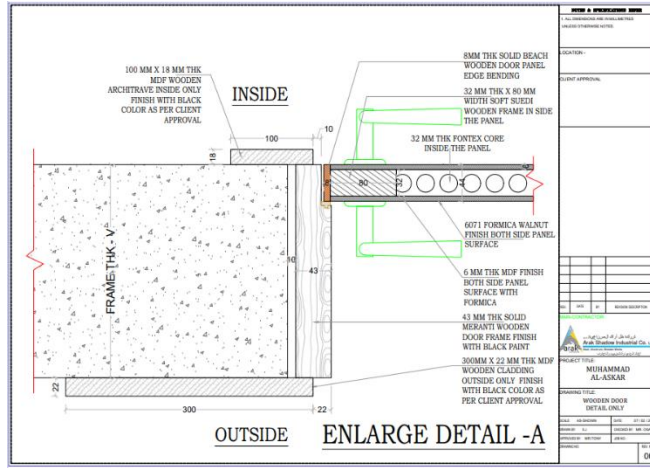
1.5 Hrs. Nil 3 Layers

## E. X-RAY PROTECTION LINED DOOR:

2 mm thickness Led line sheets onesie deon38mm thick particle board core. The Led sheets

# WOOD&WPC SHOP DWG





## PAINTING SYSTEM

**NON-PAINTED** Smooth down the exposed wood with glass paper and Treat all knots with two thin coats of patent knotting.

Opened grained hardwood should be treated with Varnish reduced 50% with thinners. When dry, fill the Grain with knifing filler. After preparation apply one Coat of suitable wood primer.

### PREVIOUSLY

**PAINTED** Burn off where necessary and remove any old and Impoverished coatings and cut out old defective Putties. Wash and rub down all sound, firmly adhering And coating and treat any exposed knots with patent Knotting. Prime all bare wood with a suitable wood Primer and bring forward primed areas with one coat.

### VARNISHED

**WOOD** Smooth down the exposed wood with glass paper. If Desired, stain the wood with an acid fast penetrating

Stain then apply one sealer coat. Varnish may be Applied after the specific over coating interval.

Modern Wood Products Factory co strictly follows the instructions of The paint manufacturer and their technical advice in Each type of paint, varnish, etc.

## WOOD DRYNG& MOISTURE CONTROL PROCESS

After receiving of wood at the factory warehouse, its moisture content is Checked with the help of an instrument and according to the percentage Of moisture the wood is separated into three types which are as follow:

Type 1:

This type of wood is already kiln dried having moisture content less than12%. This wood is directly sent to the production department for fabrication.

Type 2:

The wood containing moisture contents between12% to 20% is used for all Structural frames except doors. This wood is placed where it can absorb the solar heat. The time for the heat absorption depends upon the species of Wood and subject to the climatic conditions.

Type 3:

The wood containing moisture contents above 20% is included in this type. This wood is dried in the kiln chamber.

# WOOD PROJECTS

## An overview of our projects

Wood Projects			
No.	Client	Project	Scope of work
1	Horizons Contracting Company	King Fahad Hospital	Wood works
2	Art Craft Contracting Est.	kindergarten project	Wood works
3	Ram for Buildings Co.	Quantum Project	Wood works
4	Al khoyol Al arabiah Co .	Private villa	Wood works
5	Yasmine Al Sudais Company	Sibco Hotel	Wood works
6	Tawreed Furniture company	Private villa	Wood works
7	Sahr Al Amarah Co.	Private villa	Wood works
8	Art Craft Company	Qasr Al Maaly	Wood works
9	Art Craft Company	Private villa	Wood works
10	Middle East Company	Rest House	Wood works
11	Risalh Al hayah Co.	Risalh Al hayah Co.	Wood works
12	Rkaa Co.	Private villa	Wood works
13	Military clothing and equipment factory	Laboratory chairs	Wood works
14	Ram for Buildings Co.	Office Furniture	Wood works
15	MUHAMMAD HAFIZ	Dar Al tawheed hotel	Wood works
16	Marwan hejaz	Hamad Tower	Wood works
17	Al-Nashe company	Novotel Hotel	Wood works
18	Almarai Company	Almarai Company	Wood works
19	Nawaf bin saeed	Private villa	Wood works
20	turky al ajyan	Private villa	Wood works
21	Abdurahman Al adel	Private villa	Wood works
22	Ebtisam Al Malik	Private villa	Wood works
23	Masoud Al A mar	Private villa	Wood works
24	Sultan Al Rajhi	Private villa	Wood works
25	Fawaz Bin Saeed	Private villa	Wood works
26	Saad Al Arefe	Private villa	Wood works
27	Khalid Al salman	Private villa	Wood works
28	Khalid saleem	Private villa	Wood works
29	Abdurahman Al adel	Private villa	Wood works
30	Turky Al khathlan	Private villa	Wood works
31	Mansour Al bashir	Private villa	Wood works
32	Abdurahman Al suwilim	Private villa	Wood works
33	Shabakt Al-Tamayuz Contracting Est	Private villa	WPC works
34	Bassim Al Zamil	Private villa	PVC works
35	Rabwat Al-Yasmeen Contracting Est	Residential complex	Wood works
36	Asaad Al jamouai	Private villa	Wood works



شركة ظل أراك الصناعية  
Arak Shadow Industrial Co.





شركة ظل أراك الصناعية  
Arak Shadow Industrial Co.





شركة ظل أراك الصناعية  
Arak Shadow Industrial Co.









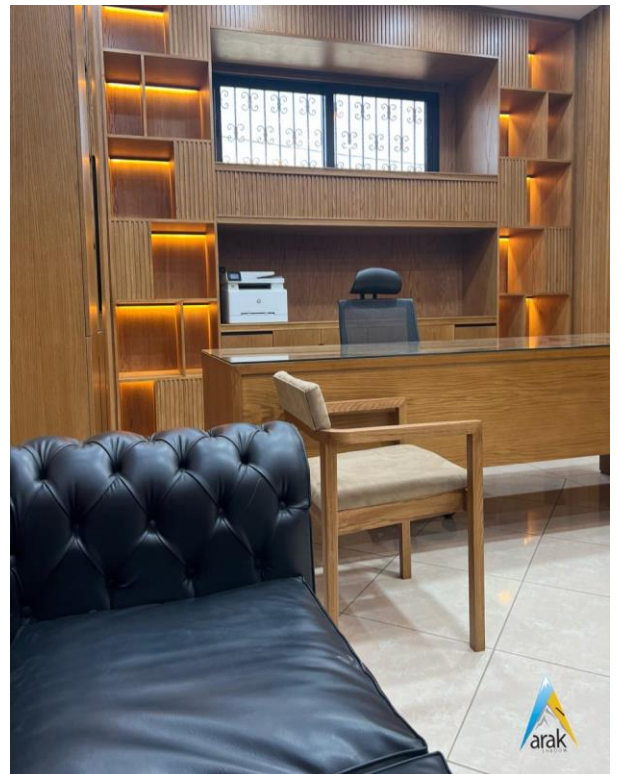
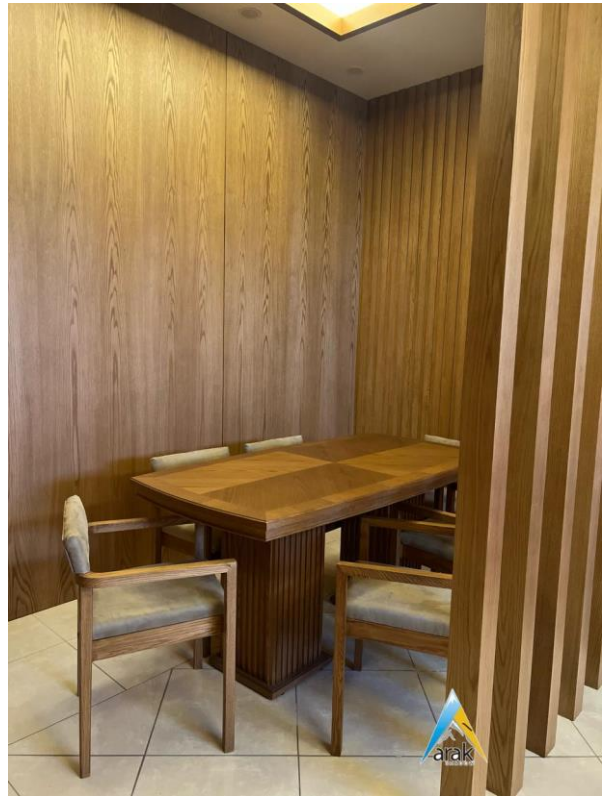
شركة ظل أراك الصناعية  
Arak Shadow Industrial Co.







شركة ظل أراك الصناعية  
Arak Shadow Industrial Co.



# WOOD APPROVALS



شركة ظل أراك الصناعية  
Arak Shadow Industrial Co.

**GCC Electrical Testing Laboratory**  
المختبر الكهربائي لاختبار المعدات الكهربائية

**Project - GCC Fire & Safety Lab / HPL Generators Building on MODON3 - Dammam, KSA**  
**Building Name :- Fire & Safety Lab**

**MATERIAL APPROVAL REQUEST**

To: LEMASTER  
Attention: Mr. Mike Butslac

Client: GCC Electrical Testing Laboratory

Ref No: KJ-123-O-EN-MAT-0080-01  
Date: 3-Apr-22

For Resubmittal Only:  
Client Letter Ref:

**APPROVAL REQUESTED FOR :** Fire and non fire rated wooden doors

Manufacturer/ Supplier : Arak Factory  
Country of Origin : Dammam / KSA  
Sample/ Finish :  
Catalogue Ref. :

Attachment:  Technical Data  Catalogue  Sample List  Physical Sample  Others - Drawings

**LOCATION WHERE USED**  
In fire safety lab building

**RELEVANT DRAWINGS AND SPECIFICATIONS:**  
Door schedule IFC drawings

**MATERIAL CONFORMS TO SPECIFICATION : YES**

Signature	Prepared By	Approved By
	And Thineah Rawindan Project Coordinator	Sadine Ehaba Project Manager

**CLIENT / CONSULTANT COMMENTS:**

Code A: Approved  Code B: Approved with Comments  Code C: Rejected (Revise & Resubmit)  Code D: For Information

Note: The given approval does not relieve the contractor from his contractual responsibility & obligation to meet the requirements of the project scope of work & technical specification

**REMARKS:**  
- SUBMIT SAMPLE PIECE FOR PHYSICAL CHECKING AND FURTHER REVIEW.  
- DETECTION OF DOORS SHALL BE AS PER APPENDED SHOP DWG.  
- SUBMIT INSTALLATION DETAILS OF THE DOOR.  
- SUBMIT MATERIAL INSPECTING REQUEST FROM DEWBURY OF MATERIALS

Signature: *[Signature]* Date: 5 APR 2022



**CLIENT** **CONSULTANT** **CONTRACTOR** **MAIN CONTRACTOR**

**السلة** **RECEIVED 28 SEP 2022**

**PROJECT: BOULEVARD WORLD RIYADH, KSA - M/S SELA PROJECT - 2**

**MATERIAL SUBMITTAL FORM (M/S)**

**SUBJECT: SAMPLE OF FIRE RATED EMERGENCY DOORS AND ACCESSORIES**

GENERAL  HOUSING  DOMITORY  INFRASTRUCTURE  WAREHOUSE  SWIMMING POOL

Discipline:  Architectural/ID  Structural  Civil  Mechanical  Electrical  Plumbing  Hardscape and Landscaping

Specs. Code & Ref. B.O.Q. Code Ref. Drawing No. **SUBMITTAL NO.:** EP-3965-O-EN-MAT-045-00

Ref.# EP-3965-O-EN-MAT-0030  New Submittal  Re-submitted

1<sup>st</sup> Submittal Date:   
Previous Sub Date:   
Present Sub Date: 28 SEP 2022

Submittal Scheduled Date:  
Sub-Contractor Name: ISF Signature:   
Address: Date:   
Manufacturer Name: Arak Shadow Industrial Co. L.L.C. Supplier/Agent Name:   
Address: Al-Sinayah, Al-Ahuzaimiya, 15671, RIYADH Address:   
Phone: +966 11 207 4771 Phone:   
Fax: Fax:   
Telex: Telex:   
T: T:

Information submitted and attached:  
Certificates  Operation & Maintenance Manual   
Technical Brochure  Spare Parts List   
Manufacturer's Data & Specs  As Built Drawings   
Shop Drawings  Warranty   
Samples  Others (specify)

Contractor's Comments: See Attachment

Note: This review does not relieve the Contractor of his responsibilities under the terms of the contract nor authorize additional compensation.

Contractor Signature: Date:   
Consultant's Comments: CHECKED AND REVIEWED THESE EMERGENCY DOOR ACCESSORIES AND FOUND ACCEPTABLE. CONTRACTOR TO SUBMIT FIRE AND SAFETY PLAN AND TO INCORPORATE LOCATION OF EMERGENCY EXIT DOORS WITH THESE MATERIALS FOR REVIEW & APPROVAL. See Attachment   
Construction Manager & Client's Comments: See Attachment

Status:  Approved  Approved As Noted  Revise and submit  Rejected  No Action

Architectural/ID: *[Signature]* 28/9/22 Consultant: *[Signature]* Client: *[Signature]*

OWNER	PMC	CONSULTANT	SUBCONTRACTOR
United Youth Company Hotels Ltd - UYCH	opeco	Saudi Consulting Services CO.	Arak Shadow Industrial Co. L.L.C.

**Project name: NOVOTEL HOTEL**  
**Location: Olaya Street, Riyadh - KSA**

**DRAWING SUBMITTAL**  
Submittal NO: NV-F&C-A-525 Submittal Date: 4/9/2023  
Previous Submittal No: Previous Submittal Date:

Discipline:  Civil  ARCHITECTURAL  STRUCTURAL  PLUMBING  ELECTRICAL  OTHER

Sl	Drawing No.	Drawing Name	Approval Status
1	NV-SD-409	Wooden Doors Elevation	
2	NV-SD-404	Wooden Doors Detail Only	
3	NV-SD-405	Wooden Doors Key Site	

Subcontractor's Remarks:   
SUBCONTRACTOR PROJECT MANAGER  
Name: S. Jharkar Date: 04/09/23

Consultant's Comments:

1. Wood door should be fire rated 90mins as per approved civil defense drawing.  
2. Wooden door leaf composition, core, and thickness should comply with the 90 mins fire rated door requirement.  
3. All dimension should align with the actual site condition.  
4. Refer to drawing comments

CLIENT REPRESENTATIVE: *[Signature]* Name:   
CONSULTANT REPRESENTATIVE: *[Signature]* Name: Ahmed Alrasheed Position:   
Date: 09/09/23

Approval Status:  Approved  Approved as noted Resubmittal is required  Disapproved  No Action

REF IN: Signature: *[Signature]* Date: 04 09 2023 REF OUT: Signature: *[Signature]* Date:   
Approval of this submittal does not relieve the subcontractor of their contractual obligations

الإستشاري	المملكة العربية السعودية
مكتب أراك للاستشارات الهندسية	وزارة الصحة
المقاول	المديرية العامة للشؤون الصحية بمنطقة القصيم
شركة الأقال لمقاولات	إدارة المشاريع والشؤون الهندسية
وزارة الصحة	Ministry of Health
مشروع الأعمال الجولفة لمشروع البرج	الطبي لمستشفى الملك فهد التخصصي بريدة

**SHOP DRAWING طلب اعتماد مخططات الورشة**

صفحة	من	رقم التقديم	تقديم جديد	إعادة تقديم	التقديم السابق
1	1	1	1	1	1

رقم المخطط	الوصف	عدد النسخ	ملاحظات
1	مخططات كرفلية لعدد المخطط	1	

تاريخ تقديم المخططات	تاريخ استلام الاستشاري للمخطط	تاريخ اعتماد الاستشاري للمخطط	تاريخ استلام المقاول للمخطط
14/09/23	14/09/23	14/09/23	14/09/23

ملاحظات:   
رأي الإستشاري:  الموافقة بالموافقة  التوصية بالموافقة مع الملاحظات  مفروض بعد   
مع استيعاب الإحاطة بالأمور الفنية وذلك لإبرازها بوضوح على مخططات الأرقام المذكورة

# STEEL FACTORY

## Our Facilities

Through constant expansion and development programs, in ARAK we are seeking to equip our factories with the latest and most advanced machinery & equipment's and our company staff are multinational with extensive experience in the steel field industry.

## Steel Factory

We specialize in all types of steel work - cutting and decorating steel ( steel doors – steel) gates and various works and designs) using the best steel machines and the highest quality.



# MACHINRY & TOOLS

EQUIPMENT REGISTER						
Sr. No	DESCRIPTION	Year	Qty	MANUFACTUTER	Model NO.	LOCATION
1	Lathe Machine	2018	1	Zhejiang Kaida Machine	GHB-1340 A	Area-1
2	Steel Profile Cutting Machine	2016	4	Thomas		Area-1
3	Fix Drill Machine	2010	1	Al-Musairiey	ZXTM-40	Area-1
4	Sheet Cutting Machine	2017	1	Ermaksan		Area-1
5	Sheet Bending Machine	2017	1	Ermaksan	22662-L6P6Y1	Area-1
6	Grinder Medium	2018	12	Makita	9015B	Area-1
7	Drill Machine	2018	7	Makita	8420V	Area-1
8	Welding Machine	2012	11	Kaierdo Jumbo		Area-1
9	Screw Fix Drill Machine	2018	5	Makita	NHP1300S	Area-1
10	Hilti Drill	2018	5	Hilti	TE 102	Area-1
11	Grinder Big	2018	1	Dewalt	D2841	Area-1
12	Compressor Machine Big	2010	1	Namerah		Area-1
13	Grinder Small	2018	5	Makita	9522NB	Area-1
14	Pipe Cutting Machine	2011	1	Dewalt	B101	Area-1
15	Compressor Machine Small	2017	5	Softer Air	V2065-200	Area-1
16	Grinder 4"	2018	4	Makita	9521NB	Area-1
17	Hilti Drill	2018	1	Hilti	TE2-M	Area-1
18	Argon Welding Machine	2018	2	Reland	ws200	Area-1
19	Hilti Drill	2018	1	Makita	HP 2010N	Area-1

## Arak Shadow Industrial Co.

- -Steel doors
- -Gates
- -Handrails
- -Steel decor (laser cut + engravings)



# STEEL SYSTEM

# TECHNICAL SPECIFICATIONS

The technical specifications of the steel used in blacksmithing vary depending on the intended use and the required design, but in general the specifications include:

- 1- steel is usually used in blacksmithing.
- 2- Size: The size of the steel used varies depending on the work required, and ranges from 3 mm in diameter to 50 mm and more.
- 3- External appearance: The steel used in blacksmithing can have different external conditions and appearances, such as black steel, black cast iron, colored cast iron, or polished.
- 4- Strength and hardness: The steel used must be characterized by the strength and hardness necessary to maintain the design and final shape.
- 5- Heat treatment: The steel used can be subjected to a heat treatment process to improve its hardness and strength.
- 6- Corrosion resistance: The steel used in blacksmithing must have good corrosion resistance in order to remain in good condition in the long term.

# STEEL PROJECTS

## An overview of our projects

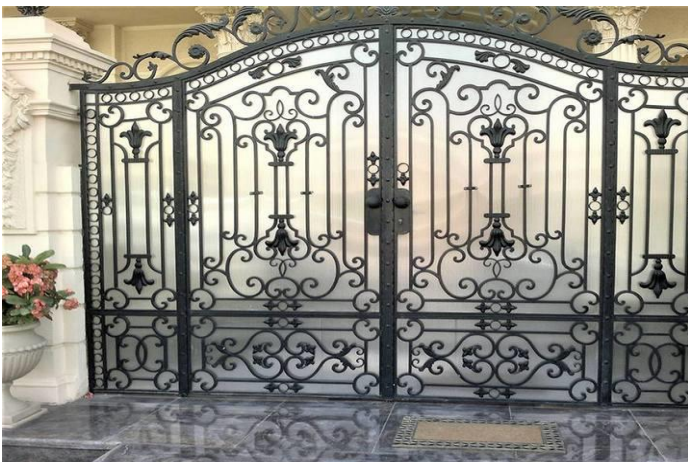
STEEL PROJECTS			
No.	Client	Project name	Scope of work
1	Al Saif Contracting Engineers Company	Private villa	Steel works
2	Art Craft Foundation	kindergarten Project	Steel works
3	Yasmine Al Sudais Company	Private villa	Steel works
4	Horizons Contracting Company	King Fahd Hospital	Steel works
5	Frist Saudi Company	Private villa	Steel works
6	Design Elements Company	Private villa	Steel works
7	Nazm Al-Ahram Contracting Company	Abaya roundabout	Steel works
8	Al khoyol Al arabiyah Company	Private villa	Steel works
9	world projects Company	Private villa	Steel works
10	Al Nasha United Company	Novotel Hotel	Steel works
11	Middle East Company	Rest house	Steel works
12	Noon Company	Where house	Steel works
13	Muhammad Abanmi	Private villa	Steel works
14	Saad bin Musharraf	Private villa	Steel works
15	Art Blade Company	Masharef Hills	Steel works
16	Assaia Sports Center	Assaia Center Project	Steel works
17	House of Expertise Company	Private villa	Steel works
18	Dar Al-Mashura Company	Private villa	Steel works
19	Al-Subaie Complex	Private villa	Steel works
20	Abdullah Al-Naqir	Private villa	Steel works
21	Faisal Al-Muhaya	Private villa	Steel works
22	Al-Suwailem Assistant	Private villa	Steel works
23	Abdullah Al-Mishari	Private villa	Steel works
24	Majid Al-Qahtani	Private villa	Steel works
25	Turki Al-Ajyan	Private villa	Steel works
26	Nasser Al-Zamil	Private villa	Steel works
27	Fahd Suleiman Al-Khowaiter	Private villa	Steel works
28	Salman Salman	Private villa	Steel works
29	Saad Al-Khowaiter	Private villa	Steel works
30	Muhanna Muhanna	Private villa	Steel works
31	Mishary Al-Jarisi	Private villa	Steel works
32	Al Saqr Real Estate Development Corporation	Private villa	Steel works
33	Construction and arts company	Private villa	Steel works
34	Al khoyol Al arabiyah Company	Sukainah 9	Steel works
35	Al khoyol Al arabiyah Company	Sukainah 10	Steel works
36	Al khoyol Al arabiyah Company	Block 10 residential complex	Steel works
37	BEC Company	AMALA Project	Steel works
38	Al Dhalayah Investment Company	Al-Subaie Complex	Steel works
39	Abdullah Al-Jarbaa Contracting Est	palace project	Steel works
40	Saudi Amana Company	Human Resources and Maintenance Complex	Steel works

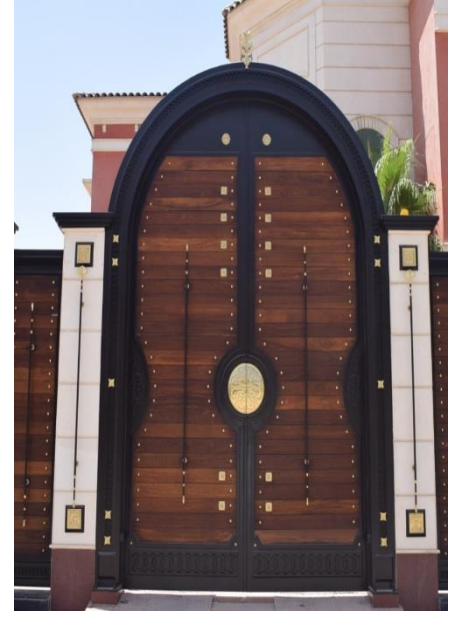


شركة ظل أراك الصناعية  
Arak Shadow Industrial Co.











شركة ظل أراك الصناعية  
Arak Shadow Industrial Co.





شركة ظل أراك الصناعية  
Arak Shadow Industrial Co.




# STEEL APPROVALS

Client:	Project:	PHASE 01 SITEWIDE INFRASTRUCTURE - MAIN CONTRACTOR	Contractor:
	Doc. Type:	MATERIAL APPROVAL (MAT)	
	Title:	TECHNICAL SUBMITTAL AND PREQUALIFICATION FOR WOODEN DOORS AND STEEL FRAME BY ARAK	
	Doc. No.:	P-0018-PROJ-SIW-00005-BIN-MAT-GAS-000305	Rev.: 00
	PMO:	JLL	ARCADIS
	ISC:	ARCADIS	SC

**MISK CITY COMPANY**  
PHASE 01 SITEWIDE INFRASTRUCTURE

**TECHNICAL SUBMITTAL AND PREQUALIFICATION FOR WOODEN DOORS AND STEEL FRAME BY ARAK**

- Hardware accessories must be submitted for approval.
- Door seal must be installed on the doors.
- All Door shop drawings for doors must be submitted for approval.
- Follow specifications for Extra Materials, Special Warranties, Maintenance, and all other requirements.
- Don't start fabrication until follow spec. for hollow core flush doors & doors materials.
- Color as client approval (see attached color below).
- wood type: SN 3005 - DAR OAK
- Metal frame Ral: 8016

Issue date	Rev	Status	Prepared by	Reviewed by	Approved by:
24-Nov-22	00	IFA	Hassan Mosa Technical engineer	Feroz khan QA/QC Manager	 Feroz Khan Project Manager

Rev. No.	SC	PM/CM	PMO	CLIENT	Final Approval Code	Date
00	HT Code B					

Prepared by: Saudi Real Estate Infrastructure Company

20250203\_08:17 Aconex

Amr Alshabanani  
REG. AMALIA DESTINATION

Final (WF-027712) 110C08 - Prequalification Approvals - 18282848  
WORKFLOW TRIGGERED


AMAALA Red Sea Global

MAIL TYPE: Workflow Transmittal  
MAIL NUMBER: AMA10110-WTRAN-032094  
REFERENCE NUMBER: AMA10110-WTRAN-032094

**Final (WF-027712) 110C08 - Prequalification Approvals - Prequalification of arak shadow for light metal works ( handrail and ladder , etc .)**

From: Mr Amr Alshabanani - RSG- Amalia Destination  
To (S): Mr Abdelkarim Alshabanani - BEC Arabia LME (+6 more...)  
Cc (R): Mr Feroz Khan - RSG- Amalia Destination (+6 more...)  
Sent: Saturday, August 19, 2023 3:51:36 PM AEST (GMT +10:00)  
Status: N/A

DOCUMENT ATTACHMENTS (1)

File	Document No.	Revision	Title	Status
	18191010-110C08-BEC-PRQ-AR-0018	C1	Prequalification of arak shadow for light metal works ( handrail and ladder , etc .)	Accepted with Comments

MESSAGE

**Workflow Review History**

The attached documents have completed the "110C08 - Prequalification Approvals - Prequalification of arak shadow for light metal works ( handrail and ladder , etc ." workflow with the following results:

Doc No	Step	Participant	Review Outcome	Comments
18191010-110C08-BEC-PRQ-AR-0018	SC_QA/QC Check	A. Sakka	Accepted	
	SC_Senior Electrical Review	M. Ghomri	Review Not Required	

https://aex.aconex.com/subsites.htm?mainTarget=32?View=Correspondence%3FCorrespondence\_ID%3D1363574538%26CORRESPONDENCE\_ID=10

20250203\_08:17 Aconex

SC\_Senior Mechanical Review V. Ajmal Review Not Required

SC\_Senior Architect Review F. Alqadhi Accepted with Comments refer to comments on the attached CRIS

SC\_Senior Structural Review G. Dumar Review Not Required

SC\_Resident Engineer R. Habbashin Accepted with Comments

Project Manager Review A. Alshabanani Accepted with Comments No objection subject to compliance with SAPL comments in CRIS.

Owner / المالك: وزارة البلدية و إدارة التخطيط العمراني  
CONSULTANT / الاستشارية: ARCHEN  
CONTRACTOR / المقاول: EL SHEIF ENGINEERING CONTRACTING Co. Ltd

PROJECT NO / رقم المشروع: South Border Housing Project  
PROJECT NAME / اسم المشروع: JAZAN-A  
Area / المنطقة: JAZAN  
Location / الموقع: SOB & S11  
Discipline / التخصص: Arch

DOCUMENT SUBMITTAL / تقديم وثائق

Ref. No / رقم المرجع: JA-CDC-SAM-A-138  
Rev. No: 00  
Sub. No / رقم الفرع: MS ARCHEN Engineering  
Date / التاريخ: 22-06-2021  
Contract No / رقم العقد: 8192026142-148

Subject / الموضوع: Samples for Wrought Iron Doors (Arak Shadow Factory for Wrought Iron & Aluminum Product) JA-MR-A-FH-027.1

FOR APPROVAL / للاعتماد  FOR INFORMATION / للمعلومات

WE SUBMIT THE FOLLOWING / نقدم ما يلي:

Item Number on Item Board	Item Description	Details	Remarks
1	Wrought Iron Doors	2 Samples Board + 2 Samples	2 Samples Board + 2 Samples for Each Sites SOB & S11

OTHER REMARKS / ملاحظات أخرى:

Contractor's Authorized Manager / مدير المشروع المصرح به: Tarek Al Mamoun  
Signature / توقيع: [Signature]  
Date / التاريخ: 23-06-2021

Consultant's Representative / ممثل الاستشارية: Adnan Elmaleh  
Signature / توقيع: [Signature]  
Date / التاريخ: 23/06/2021

Consultant's Representative / ممثل الاستشارية: Hosam Abdou  
Signature / توقيع: [Signature]  
Date / التاريخ: 23/06/2021

STATUS / الحالة:  APPROVED / تمت الموافقة  APPROVED AS NOTED / تمت الموافقة مع ملاحظات  REVISE & RESUBMIT / مراجعة وإعادة تقديم  REJECTED / رفض

Signature / توقيع: [Signature] Date / التاريخ: 23/06/2021

IPMC AMANA

NOON LOGISTIC HUB RIYADH  
WORKING SPECIFICATION REQUEST

Reference: KA-127-O-EN-SAR-03B-0100  
Originator of Req: Amir Salah Date: 8/Aug/23  
Location/Area of Insp: Senior Block # 2 Insp Date: 9/Aug/23  
Inspection Time: 10:00 AM

Type of Work:  Structural  Electrical  HVAC  Mechanical  Landscaping  Survey  Other (Specify):

Work Element to be Inspected: Inspection for the installation of steel handrail at stair & ramp area as highlighted in the attached drawing.

Inspection Block: # 2 Stairs Entrance & Ramp  
Drawing Ref: KA-127-O-EN-SAR-03B-0100

Attachments:  Provider's QA/QC Checklist  Survey Report  As-Built Plan in A4 (highlighted)  Other: [None]

Contractor's QA/QC Engineer Sign: [Signature]  
Contractor's Representative Sign: [Signature]

Consultant's Representative Sign: [Signature]

Inspection Request Rec: [Signature]

Electrical Inspection: [ ]  
Mechanical Inspection: [ ]  
Soil & Survey Insp: [ ]

Others (Specify): [None]

Signature / توقيع: [Signature] Date: 10/08/2023

Inspected for the installation of steel handrail for ramps and stairs at service block #2 as per highlighted drawing. The comments for all alignments were rectified. The installation was in accordance to the approved drawing.

Signature / توقيع: [Signature] Date: 10-8-23

Signature / توقيع: [Signature] Date: [ ]

# OFFICIAL Certificates



شركة ظل أراك الصناعية  
Arak Shadow Industrial Co.



**SANKYU**

**AMANA.**  
WE BUILD WITH YOU

## **CERTIFICATE OF APPRECIATION**

*Awarded to*

**ARAK COMPANY**

*ALUMINUM AND CLADDING WORKS*

*Given this 15th day of July year 2024*

*At PROJECT*

**MAINTENANCE AND HUMAN RESOURCES**

**DEVELOPMENT CENTER**

**KJ138 PROJECT JUBAIL, KSA**

*Abdullah Al Kilani*  
*Amana Project Director*

*Ahmed Rabie Hassan*  
*Amana Project Manager*



٧٠١١٦٩٢٢٠٤  
الرقم الموحد :  
١٠١١٩٣٢٦٩  
رقم المنشأة :  
١٤٢٤/١١/١٩  
التاريخ :

**شهادة تسجيل الشركة**  
Company Registration Certificate

الاسم التجاري للشركة : شركة ظل أراك الصناعية  
نوعها : ذات مسؤولية محدودة  
مدة الشركة : ٩٩ سنة  
مركزها الرئيسي : ٠٠٠٠ ٠٠٠٠  
هاتف :  
النشاط : تطلاع على بيانات الأنشطة الرجاء مسح الرمز التجاري  
رأس المال : ٤٠٥٠٠٠٠ ريال سعودي  
المديرون : 1: نبيل جرجس ابراهيم  
2:  
3:  
4:  
5:  
6:  
7:  
8:  
9:  
10:  
11:  
12:  
13:  
14:  
15:  
16:  
سلطات المدير/المديرون : حسب ما نص عليه عقد الشركة  
يشهد مكتب السجل التجاري بمدينة الرياض : بأنه تم تسجيل الشركة المذكورة أعلاه بمدينة الرياض : بتاريخ ١٤٤٤/٠٤/١٤  
وتنتهي صلاحية الشهادات في : ١٤٤٦/١١/١٩ بموجب الإيصال رقم : ٨١٧٤٥٤٧



يتم التحقق من صحة هذه الشهادة بالدخول على <http://mc.gov.sa> Kingdome of Saudi Arabia | الرياض 11162 | +966 11 294 4444  
www.mc.gov.sa | المملكة العربية السعودية | @McGovSA

الرقم الموحد Tax No. ٧٠١١٦٩٢٢٠٤  
رقم الشهادة Certificate No. ١٠١١٩٣٢٦٩  
تاريخ الصلاحية Issue Date ١٤٢٤/١١/١٩

المملكة العربية السعودية  
Kingdom of Saudi Arabia  
هيئة الزكاة والضريبة والجمارك  
Zakat, Tax and Customs Authority

**شهادة**  
Certificate  
The Zakat, Tax and Customs Authority certifies that the Taxpayer

شركة ظل أراك الصناعية  
Arak Shadow Industrial Co. JED No. ٧٠١١٦٩٢٢٠٤

الرقم الموحد المنشأة رقم هوية  
٧٠١١٦٩٢٢٠٤

سجل تجاري / بائع / رقم بائع  
١٠١١٩٣٢٦٩

قد تم إقراره عن الفترة المتبقية في ٧/٠٤/١٤٤٤ هـ. وقد منح هذه الشهادة للجهة، جميع معاملاتك بما في ذلك حراف معاملاتك التجارية من المكون. يرجى ملاحظة هذه الشهادة حتى تاريخ ١٤٤٤ هـ الموافق ٢٠٢٤-٠٤-١١ AD (الخاصة بالمستثمرين من حول العالم، وأيضاً للمستهلكة والمستهلكة التجاري).  
The Taxpayer first of Showarot one thousand four hundred forty-five (1445) AD

تاريخ انتهاء العضوية September 11, 2024  
الرجاء التحقق من صحة ومدة عضوية الشركة عبر رابط الشهادة [www.zatca.gov.sa](http://www.zatca.gov.sa)

الهيئة العامة للزكاة والضريبة والجمارك  
Zakat, Tax and Customs Authority  
www.zatca.gov.sa | 19993 | @zatca.sa

SCA  
الهيئة السعودية للمقاولين  
Saudi Contractors Authority

شهادة  
عضوية  
مقاول

تاريخ الصلاحية Sep. 2023 27

شركة ظل أراك الصناعية  
Arak Shadow Industrial Co. رقم العضوية : 365836583

تاريخ نهاية العضوية September 11, 2024  
الرجاء التحقق من صحة ومدة عضوية الشركة عبر رابط الشهادة [www.sca.gov.sa](http://www.sca.gov.sa)

الهيئة العامة للمقاولين  
Saudi Contractors Authority  
www.sca.gov.sa | 365836583 | @sca.sa

VISION 2030  
رؤية ٢٠٣٠  
الهيئة العامة للمقاولين  
Saudi Contractors Authority

الهيئة العامة للزكاة والضريبة والجمارك  
General Authority of Zakat & Tax

شهادة  
القيمة  
المضافة  
VAT

تاريخ الإصدار: 2019/05/02  
الرقم الموحد: 3103621551

شهادة تسجيل في ضريبة القيمة المضافة  
VAT Registration Certificate

تنتهت الهيئة العامة للزكاة والضريبة والجمارك بأن المكلف أدناه مسجل في ضريبة القيمة المضافة بتاريخ 2019/05/02

Hereby, The General Authority of Zakat & Tax (GAZT) certifies that the taxpayer below is VAT registered on 02/05/2019

اسم المكلف: شركة ظل أراك الصناعية  
رقم التسجيل الضريبي: 310362155100003  
تاريخ نفاذ التسجيل: 2019/05/01  
عنوان المكلف: الرياض، التخصصي، الصاب 11444

هذه الوثيقة مرسلة من النظام الآلي ولا تحتاج إلى توقيع  
- الهيئة العامة للزكاة والضريبة والجمارك -



شركة ظل أراك الصناعية  
Arak Shadow Industrial Co.

QIWA  
قيو



## شهادة التوطين

رقم الشهادة	207804-19900927
تاريخ الإصدار	13/11/2023
تاريخ انتهاء الصلاحية	02/10/2024
تاريخ التحديث/التحديث	04/07/2024
حالة الشهادة	تم التحقق
اسم المنشأة	شركة ظل أراك الصناعية
رقم المنشأة	1-2166608
رقم السجل التجاري	1010193269
رقم المنشأة الموحد	7011692204
مستوى تطلقات	اخضر متوسط
معدل التوطين	13%



The Ministry of Human Resources and Social Development certifies that the above mentioned Establishment has achieved the required Saudization rate and has been granted this certificate upon request.

تشهد وزارة الموارد البشرية والتنمية الاجتماعية بأن المنشأة المذكورة أعلاه قد أوفت بالالتزامات تجاه المؤسسة وفق البيانات المقدمة منها حتى تاريخ إصدار هذه الشهادة ، والتي تم منحها لتقديمها لأية جهة تطلبها ، وهي صالحة لجميع الأغراض التي نص عليها نظام التأمينات الإجتماعية في المادة (١٩/٦) منه.

The certificate is electronically generated and approved by the authority. It does not require any signature or stamp.

هذه الشهادة سارية المفعول حتى ١٤٤٦/٠١/٢٦ هـ. يلزم التحقق من صحة وصلاحية الشهادة عبر زيارة الرابط أدناه في الموقع الإلكتروني للمؤسسة العامة للتأمينات الإجتماعية

رؤية 2030  
المنطقة الحرة الاقتصادية  
KINGDOM OF SAUDI ARABIA

التاريخ ١٤٤٥/١٢/٢٧  
الموافق ٠٣/٠٧/٢٠٢٤  
رمز الشهادة ٦٧٩٤٠٥٦٥



### شهادة

إسم المنشأة : شركة ظل أراك الصناعية

الرياض  
السعودية

رقم الإشتراك : ٦٠٥٥٦٦٩٤٤  
رقم السجل التجاري: ١٠١٠١٩٣٢٦٩٩

عدد المشتركين السعوديين ٦  
عدد المشتركين غير السعوديين ٣٧  
المجموع ٤٣

تشهد المؤسسة العامة للتأمينات الإجتماعية بأن المنشأة المذكورة أعلاه قد أوفت بالالتزامات تجاه المؤسسة وفق البيانات المقدمة منها حتى تاريخ إصدار هذه الشهادة ، والتي تم منحها لتقديمها لأية جهة تطلبها ، وهي صالحة لجميع الأغراض التي نص عليها نظام التأمينات الإجتماعية في المادة (١٩/٦) منه.

هذه الشهادة سارية المفعول حتى ١٤٤٦/٠١/٢٦ هـ.

يلزم التحقق من صحة وصلاحية الشهادة عبر زيارة الرابط أدناه في الموقع الإلكتروني للمؤسسة العامة للتأمينات الإجتماعية



[www.gosi.gov.sa/vc](http://www.gosi.gov.sa/vc)

( الشهادة معتمدة من صاحب الصلاحية ولا تحتاج إلى توقيع أو ختم )

ننهادة

[www.gosi.gov.sa](http://www.gosi.gov.sa)  
800 1243344



التأمينات الإجتماعية  
مؤسسة عامة

تعد هذه الشهادة من الوثائق الإلكترونية الحكومية الرسمية ، ويحظر عليها نقلها أو إدخال أي تعديلات عليها سواء بالإضافة أو الحذف أو التغيير في بياناتها أو غير ذلك من أنواع التعديل ، وبعد الشهادة لاجبة أيا شياها شرم من ذلك ، كما تعرض صنعها لملاحقة التنظيمية أمام الجهات المختصة بالإضافة إلى ميلافهه نظم التأمينات الإجتماعية من ظهريات ، والهجوز تداول الشهادة إلا في الأغراض التي أصدرت لإلها ولقلا لا يمكن نظم التأمينات الإجتماعية ، والمؤسسة العامة للتأمينات الإجتماعية غير مسؤولة عن أي آثار أخرى مترتبة قبل تغير عن الشهادة وغير مسؤولة عن أي عصفه تزوير أو تعديل تتم على البصمة الورقية فيها .

الرقم: ١١١١٠٠٢٤٧٤  
التاريخ: ١٤٣٧/١٠/٢٦ هـ

شهادة تسجيل فرع الشركة

الرقم الموحد للمنشأة: ٧٠٠٣٩١١٧٧٤ الاسم التجاري للشركة: شركة ظل أراك الصناعية

نوعها: ذات مسؤولية محدودة رأس مالها: ١١٠٥٠٠٠ ريال سعودي

مركزها الرئيسي: الرياض - المنطقة الصناعية - المزاخمية 101

ص ب: الرمز البريدي: ١٠١٠١٣٣٦٩ هاتف: ٢٧٠٠٧٧١

رقم سجل المركز الرئيسي: ١٠١٠١٣٣٦٩ تاريخه: ١٤٢٤/١١/١٩ هـ مصدره: الرياض

الاسم التجاري: مصنع ظل أراك لأخرقة الحديد والالمنيوم

العنوان: المزاخمية - المنطقة الصناعية

ص ب: ٢٥٥٦٥٩ الرمز البريدي: ١١٣٥٣ هاتف: ٢٧٠٠٧٧١

النشاط: للإطلاع على بيانات الأنشطة الرجاء مسح الرمز التجاري

اسم المدير (رئيس): لؤي احمد محمد الخثيث

الجنسية: سعودي تاريخ الميلاد: ١٣٩٥ هـ مكان الميلاد: العربية السعودية

رقم السجل المدني: ١٠٢٢٨٨٣٩٦ تاريخه: ١٤٣٣/١٠/٠٨ هـ مصدره: مقر الوكالة بالرياض

سلطات المدير: حسب ما نص عليه عقد الشركة تاريخه: - مصدره: -

يشهد مكتب السجل التجاري بمدينة: المزاخمية بأنه تم تسجيل فرع الشركة المذكورة أعلاه بمدينة: المزاخمية

وتنتهي صلاحية الشهادة في: ١٤٤٦/١٠/٢٦ هـ بموجب الإجمالي رقم: ٧٤١٩٤٢١ وتاريخ: ١٤٢٧/٠٥/٠٨ هـ

عبد المحسن بن إبراهيم الحمد  
التوقيع:



يمكنك التحقق من صحة هذه الشهادة بالدخول على <http://v.mci.gov.sa>



رؤية  
2030  
المملكة العربية السعودية  
KINGDOM OF SAUDI ARABIA

### ترخيص منشأة صناعية

وزارة الصناعة  
والطاقة المعدنية  
Ministry of Industry and Mineral Resources



رقم الترخيص الصناعي:	1424100176022	تاريخ الإصدار:	2003-06-15	تاريخ الانتهاء:	2025-05-02
رمز المنشأة الصناعية:	160322	الرقم الموحد:	7003611774		
اسم المنشأة الصناعية:	مصنع ظل أراك لأخرقة الحديد والالمنيوم				
عنوان المنشأة الصناعية:	المزاخمية - منطقة الرياض				
اسم السجل التجاري:	مصنع ظل أراك لأخرقة الحديد والالمنيوم				
عنوان السجل التجاري:	2813 المزاخمية 6704-19658				
رقم السجل التجاري:	1111002474	نوع السجل التجاري:	ذات مسؤولية محدودة	رأس المال:	4105000



حالة المنشأة الصناعية:

للإطلاع على تفاصيل الأنشطة الاقتصادية  
والمنتجات المرخصة، والبيانات التفصيلية  
والاشتراطات والمتطلبات؛ يرجى مسح الرمز  
الإلكتروني

التابع:

البناء:

النسب:

وزارة الصناعة والطاقة المعدنية

بندر بن إبراهيم الخثيث

بلدي balady

### رخصة نشاط تجاري Commercial Activity Licence شركة ظل أراك الصناعية

رقم الرخصة الموحد: 40021740508 تاريخ نهاية الترخيص: 1447/12/25

اسم المالك: شركة ظل أراك الصناعية - -

رقم هوية المالك: 7011692204 - 7011692204

التصنيف الصناعي الفرعي (نشاط أراك): تركيب الابواب والشبابيك وإطارات الابواب والشربوب والديزيرينات والسلاطم والمطابخ الخشبية

النشاط التفصيلي: تركيب الابواب والشبابيك والشربوب إطارات الابواب والديزيرينات والسلاطم والمطابخ الخشبية

البلدية: بلدية المعذر Sub-Municipality: أمانة منطقة الرياض Municipality: الحي: المحمدية District: شارع: التخصصي Street: مساحة الهول الرجولية: 216 متر مربع Shop's Total Area: مساحة التجهيزات الرجولية: 6 متر مربع اشغادي | 0 متر مربع اعلاي Shop's Sign's Area

موقع السجل



شركة ظل أراك الصناعية  
Arak Shadow Industrial Co.

QIWA  
قي

الموارد البشرية  
والتنمية الاجتماعية

## شهادة التوطين

رقم الشهادة	724414-88225208
تاريخ الإصدار	25/07/2024
تاريخ انتهاء الصلابة	23/10/2024
تاريخ التجديد/التحديث	—
حالة الشهادة	تم التحقق
اسم المنشأة	مصنع ظل أراك لزخرفة الحديد والالمنيوم
رقم المنشأة	1-2180949
رقم السجل التجاري	1111002474
رقم المنشأة الموحد	7003611774
مستوى نطاقات	اخضر منخفض
معدل التوطين	20%



The Ministry of Human Resources and Social Development certifies that the above mentioned Establishment has achieved the required Saudization rate and has been granted this certificate upon request.

تشهد وزارة الموارد البشرية والتنمية الاجتماعية بأن المنشأة المذكورة لقد حققت نسبة التوطين المطلوبة وتم منحها هذه الشهادة بناءً على طلبها.

The certificate is electronically generated and approved by the authority. It does not require any signature or stamp.

الشهادة تم إنشاؤها إلكترونياً ومصدقة من الجهة المختصة ولا تحتاج إلى ختم أو توقيع.

رؤية  
2030  
الجمهورية العربية السعودية  
KINGDOM OF SAUDI ARABIA

التاريخ  
الموافق  
رمز الشهادة

١٤٤٥/١٢/٢٧  
٠٣/٠٧/٢٠٢٤  
٦٧٩٤٠٩٦٦

المؤسسة العامة للتأمينات الاجتماعية  
General Organization for Social Insurance

### شهادة

إسم المنشأة : مصنع ظل أراك لزخرفة الحديد والالمنيوم

الرياض  
السعودية  
رقم الإشتراك : ٥٩٣٧٢١٧٦٠  
رقم السجل التجاري: ١١١١٠٠٢٤٧٤

عدد المشتركين السعوديين  
عدد المشتركين غير السعوديين  
المجموع

رقماً  
كتابة

١٤  
٦٦  
٧٥

أربعة عشره مشتركا  
واحد وستون مشتركا  
خمسة وسبعون مشتركا

تشهد المؤسسة العامة للتأمينات الاجتماعية بأن المنشأة المذكورة أعلاه قد أوفت بالالتزامات تجاه المؤسسة وفق البيانات المقدمة منها حتى تاريخ إصدار هذه الشهادة ، والتي تم منحها للتقديم لأية جهة تطلبها ، وهي صالحة لجميع الأغراض التي نص عليها نظام التأمينات الاجتماعية في المادة (١٩/٦) منه.



هذه الشهادة سارية المفعول حتى ١٤٤٦/٠١/٢٦ هـ.  
يلزم التحقق من صحة وصلاحية الشهادة عبر زيارة الرابط  
أدناه في الموقع الإلكتروني للمؤسسة العامة للتأمينات الاجتماعية  
أو عن طريق استخدام  
الرمز المعرف التالي :

www.gosi.gov.sa/vc

( الشهادة معتمدة من صاحب الصلابة ولا تحتاج إلى توقيع أو ختم )

شهادة

www.gosi.gov.sa  
800 1243344



تعد هذه الشهادة من الوثائق الإلكترونية الحكومية الرسمية ، ويحظر قطعها تقليدها أو إرسال أي تعديلات عليها سواء بالإضافة أو الحذف أو التغيير في بياناتها أو غير ذلك من أنواع التعديل ، وتعد الشهادة لاغية إذا شُبهها شيء من ذلك ، كما تعرض صاحبها للملاحقة النظامية أمام الجهات المختصة بالإضافة إلى معارضة نظام التأمينات الاجتماعية من قطاعات ، وإيجوز تداول الشهادة إلا في الأغراض التي أصدرت لأجلها وفقاً لأحكام نظام التأمينات الاجتماعية ، والمؤسسة العامة للتأمينات الاجتماعية غير مسؤولة عن أي اثر آخر مترتبة قبل النشر عن الشهادة وغير مسؤولة عن أي عسفة تزوير أو تعديل تتم على البيانات الواردة فيها .

التأمينات الإلكترونية  
مستند من صحت



شركة ظل أراك الصناعية  
Arak Shadow Industrial Co.

Certificate number: IFCC 1969 Issue 1



The production of fire-resistant timber doorsets are manufactured in accordance with assessment/ test reports referenced within the following table:

Doorset Description	Fire Rating	Assessment/Test Report
SASL Composite 45 Mineral Board	20 minutes	190527003-SHF-002
SASL Composite 45 Mineral Board	60 minutes	190527003-SHF-003
SADL Composite 45 Mineral Board	90 minutes	190527003-SHF-004
SASL Composite 45 Mineral Board	60 minutes	210206852
SASL Composite 45 Mineral Board	60 minutes	210329870

Signed on behalf of Kiwa UK

David Mowatt  
Head of FC Certification /  
KIWA Group Limited

The scope of the certification is limited to the details and parameters contained within these reports and all aspects of the specification and limitations defined therein must be satisfied.

It is the certificate holder's responsibility to ensure that the latest version/ revision of the above assessment reports are maintained as part of the audited FPC system.

Failure to comply with all specifications will invalidate the certification and may jeopardise the fire performance.



### FIRE RESISTANT TIMBER FIRE DOORS

Certificate number: IFCC 1969

Certificate only valid if verified on website – www.ifccertification.com

Issued by IFC Certification Ltd, part of the Kiwa UK Group

This is to certify that

### Arak Shadow Industrial Company

A2813, Unit #136,  
Al Muzahimiyah 19658-6704,  
Riyadh.  
Kingdom of Saudi Arabia  
Tel: 00966112074771

Who fabricate the following timber-based fire doors and or doorsets:

**DansnBAN Single Leaf Swing Wooden Composite Fire Door**  
**DansnBAN Double Leaf Swing Wooden Composite Fire Door**  
**DansnBAN Single Leaf Wooden Composite Fire Door c/w Vision Panel**

have satisfied the requirements of the SDP 01 Timber Fire Door scheme. This includes the testing of products to **UL10C**, the inspection of their Factory Production Control continuing surveillance audits and testing of samples of products taken from production. The product specification and field of application to achieve from **20 minutes to 90 minutes integrity** are detailed on page 2 of this certificate.

Initial Certification: 09 September 2024  
Valid to: 08 September 2029  
Issue number: 1

David Mowatt  
Head of IFC Certification /  
KIWA Group Limited

This certificate consists of 2 pages.  
Publication of this certificate is permitted.

CERTIFICATE

CERTIFICATE

Page 2 of 2



IFC Certification Ltd  
Ground Floor, Suite A, Building 2  
Bear Brook Office Park  
Walton Street  
Aylesbury  
Buckinghamshire  
HP21 7GQ  
United Kingdom  
T +44 (0)1844 276920  
www.ifccertification.com



IFC Certification Ltd  
Ground Floor, Suite A, Building 2  
Bear Brook Office Park  
Walton Street  
Aylesbury  
Buckinghamshire  
HP21 7GQ  
United Kingdom  
T +44 (0)1844 276920  
www.ifccertification.com



شركة ظل أراك الصناعية  
Arak Shadow Industrial Co.

Certificate number: IFCC 1968 Issue 1



The production of fire-resistant timber doorsets are manufactured in accordance with assessment/ test reports referenced within the following table:

Doorset Description	Fire Rating	Assessment/Test Report
Strebord	FD30	IFCA/08037 (SS01)
Strebord	FD60	IFCA/08038 (SS02)
Ramkor	FD60, FD90	PAR/17082/01 (RA01)
Ramkor	FD120	PAR/19681/01 (RA02)
FireBAN	FD30	PAR/10346/01 (GTLS03)
FireBAN	FD60	PAR/10346/02 (GTLS03)
FireBAN	FD90	PAR/11018/01 (GTLS03)
FireBAN	FD120	PAR/13335/01 (GTLS04)

Signed on behalf of Kiwa UK

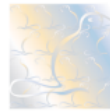
David Mowatt  
Head of IFC Certification /  
KIWA Group Limited

The scope of the certification is limited to the details and parameters contained within these reports and all aspects of the specification and limitations defined therein must be satisfied.

It is the certificate holder's responsibility to ensure that the latest version/ revision of the above assessment reports are maintained as part of the audited FPC system.

Failure to comply with all specifications will invalidate the certification and may jeopardise the fire performance.

Page 2 of 2



## FIRE RESISTANT TIMBER FIRE DOORS

Certificate number: IFCC 1968

Certificate only valid if verified on website – www.ifccertification.com

Issued by IFC Certification Ltd, part of the Kiwa UK Group

This is to certify that

### Arak Shadow Industrial Company

A2813, Unit #136,  
Al Muzahimiyah 19658-6704,  
Riyadh.  
Kingdom of Saudi Arabia  
Tel: 00966112074771

Who fabricate the following timber fire doors and or doorsets:

**Strebord FD30, FD60, Ramkor FD90, FD120.  
FireBAN FD30, FD60, FD90, FD120.**

have satisfied the requirements of the SDP 01 Timber Fire Door scheme. This includes the testing of products to **BS476: Part 22**, the inspection of their Factory Production Control continuing surveillance audits and testing of samples of products taken from production. The product specification and field of application to achieve from **30 minutes to 120 minutes integrity** are detailed on page 2 of this certificate.

Initial Certification: 09 September 2024

Valid to: 08 September 2029

Issue number: 1

David Mowatt  
Head of IFC Certification /  
KIWA Group Limited

*This certificate consists of 2 pages.  
Publication of this certificate is permitted.*



IFC Certification Ltd  
Ground Floor, Suite A, Building 2  
Bear Brook Office Park  
Walton Street  
Aylesbury  
Buckinghamshire  
HP21 7GQ  
United Kingdom  
T +44 (0)1844 279920  
www.ifccertification.com

IFC Certification Ltd  
Ground Floor, Suite A, Building 2  
Bear Brook Office Park  
Walton Street  
Aylesbury  
Buckinghamshire  
HP21 7GQ  
United Kingdom  
T +44 (0)1844 279920  
www.ifccertification.com

CERTIFICATE

CERTIFICATE



## Certificate of Registration

This is to certify that the Environmental Management System (EMS) of  
**Arak Shadow Industrial Company**  
AL-Takhassusi 7530, Al Muhammadiyah Dist.3466, Postal Code 12364, Riyadh  
Kingdom of Saudi Arabia  
Has been successfully assessed as per the requirement of

### ISO 14001:2015

For the scope of

**Fabrication and Installation Aluminium Curtain Wall, APC Cladding, Doors and Windows, Frameless Glass Partitions, Steel Structure, Wrought Iron Gate, Doors, Railing, Steel Hollow Metal Doors, Stainless Steel, Brass Works. Wooden Doors, Cladding, Cabinets, CNC Decors, WPC Doors.**

Initial Registration Date	:	28 - 08 - 2024
Certificate Issue Date	:	28 - 08 - 2024
1 <sup>st</sup> Surveillance Date	:	27 - 08 - 2025
2 <sup>nd</sup> Surveillance Date	:	27 - 08 - 2026
Expiry Date	:	27 - 08 - 2027
Certificate Registration Number	:	CN-EMS-1525727
Accreditation Number	:	CB - MS - 5635

Managing Director



Accredited by United Accreditation Foundation (UAF)  
400 North Center Dr, STE 202, Norfolk, VA 23502  
United States of America

<https://uafaccreditation.org/> <https://iafcertsearch.org/> <https://anssystemcertification.com/>  
Visit the websites to verify your certificate.



This certificate is the property of ANS System Certification Private Limited



## CERTIFICATE OF REGISTRATION

INTERCERT hereby certifies that the Quality Management System of

**ARAK SHADOW INDUSTRIAL COMPANY.**

2813, Unit No. 136, Al Muzahimiyah 19658- 6704, Kingdom of Saudi Arabia

Has been successfully assessed as per the requirements of

### ISO 9001:2015

For the scope of

**Wrought Iron, Aluminum Products, Stainless Steel, Wood and Brass.**

Initial Certification Date	:	February 11, 2022
Certificate Issue Date	:	February 11, 2022
Recertification Date	:	February 10, 2025

Registration Number: IC-QM-2202068

Managing Director

Issued on behalf of InterCert  
Head - Certifications



The validity of this certificate can be verified at [www.intercert.com](http://www.intercert.com) or through email at [info@intercert.com](mailto:info@intercert.com). This certificate is the property of INTERCERT INC, 2001 Timberloch Place - Suite 500, The Woodlands, Texas 77380, United States and must be returned on request.



## Certificate of Registration

This is to certify that the Occupational Health & Safety Management System (OH&SM) of

**Arak Shadow Industrial Company**

AL-Takhassusi 7530, Al Muhammadiyah Dist.3466, Postal Code 12364, Riyadh  
Kingdom of Saudi Arabia  
Has been successfully assessed as per the requirement of

### ISO 45001:2018

For the scope of

**Fabrication and Installation Aluminium Curtain Wall, APC Cladding, Doors and Windows, Frameless Glass Partitions, Steel Structure, Wrought Iron Gate, Doors, Railing, Steel Hollow Metal Doors, Stainless Steel, Brass Works. Wooden Doors, Cladding, Cabinets, CNC Decors, WPC Doors.**

Initial Registration Date	:	28 - 08 - 2024
Certificate Issue Date	:	28 - 08 - 2024
1 <sup>st</sup> Surveillance Date	:	27 - 08 - 2025
2 <sup>nd</sup> Surveillance Date	:	27 - 08 - 2026
Expiry Date	:	27 - 08 - 2027
Certificate Registration Number	:	CN-OH&S-1525728
Accreditation Number	:	CB - MS - 5631

Managing Director



Accredited by United Accreditation Foundation (UAF)  
400 North Center Dr, STE 202, Norfolk, VA 23502  
United States of America

<https://uafaccreditation.org/> <https://iafcertsearch.org/> <https://anssystemcertification.com/>  
Visit the websites to verify your certificate.



This certificate is the property of ANS System Certification Private Limited & must be returned on request.

# ARAK SHADOW INDUSTRIAL CO.